

## The influence of Taoism



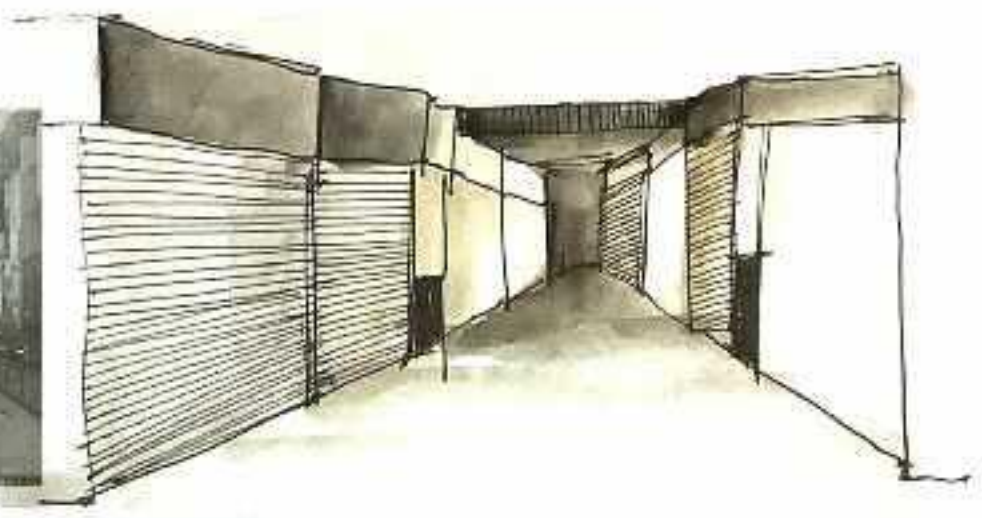
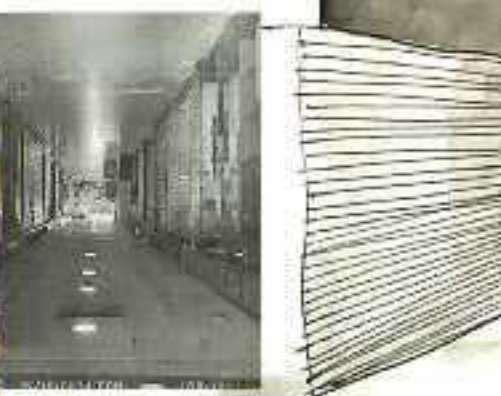
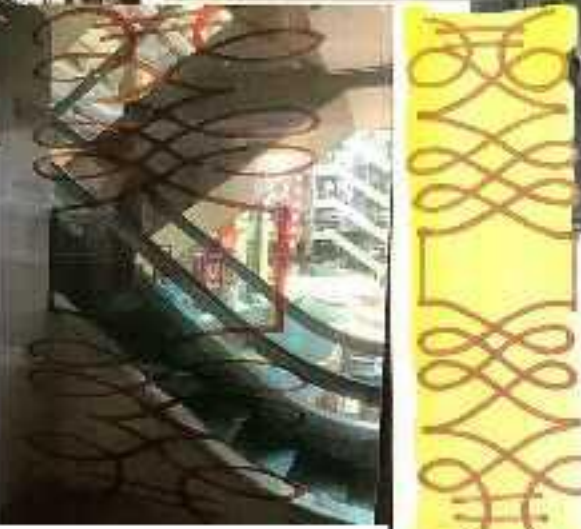
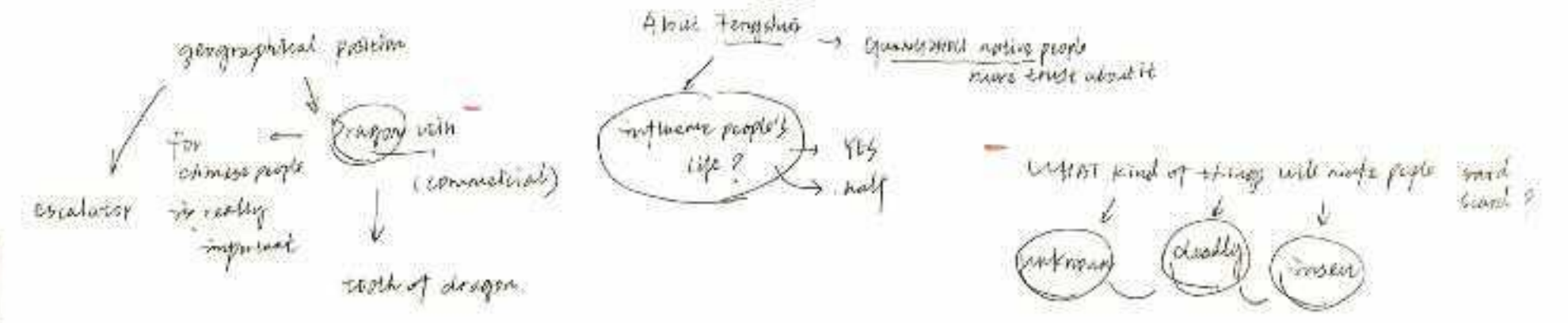
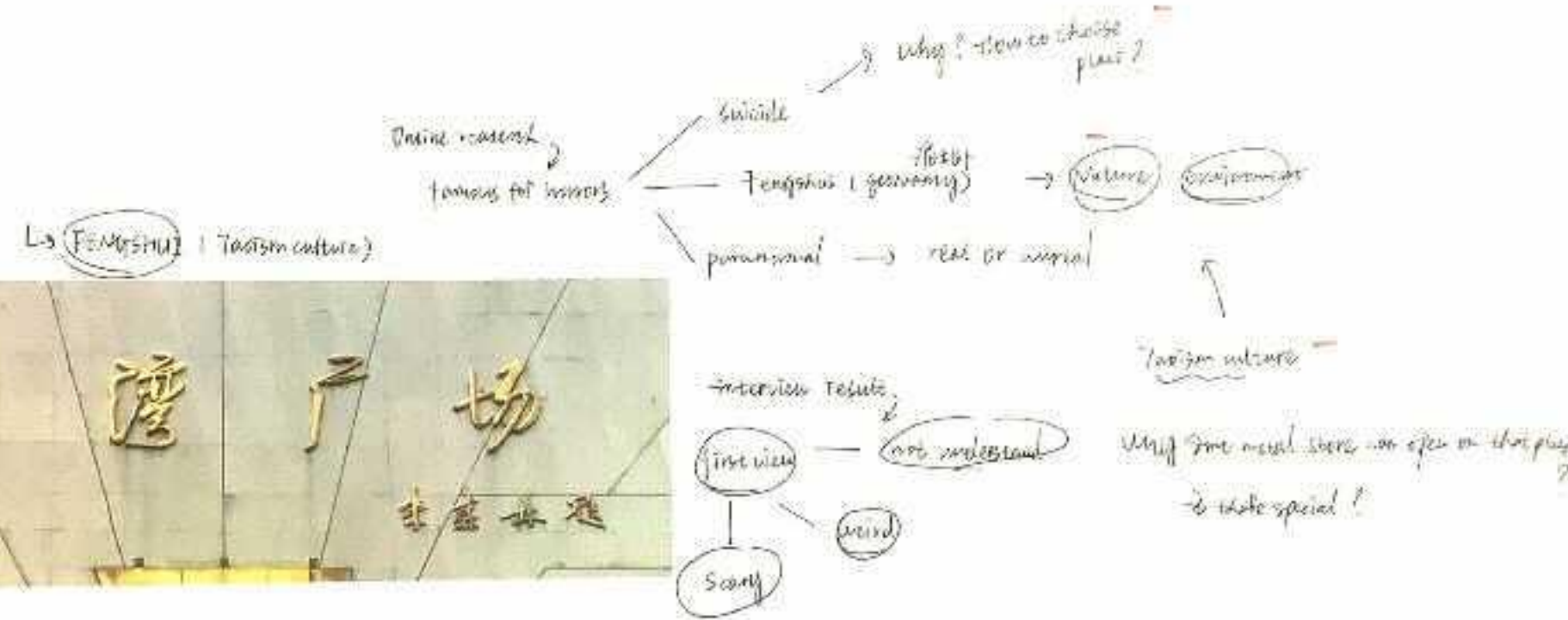
The theme of this project is the influence of Taoism on human life. The inspiration comes from the frequent suicides in Liwan Square. Through my research, I find that it is because liwan Square is affected by geographical location

My development depended on the five elements of Taoism, feng shui, Yin and Yang

The influence of Yin and Yang and the five elements on people is related to the arrangement, including the five zang organs corresponding to the five elements, which will have an impact on people, so I visualized Yin and Yang

Taoism originated in ancient China, so my choice of fabric is also based on the combination of ancient multi-layer gauze clothing and Taoist clothing

# The Influence of Taoism



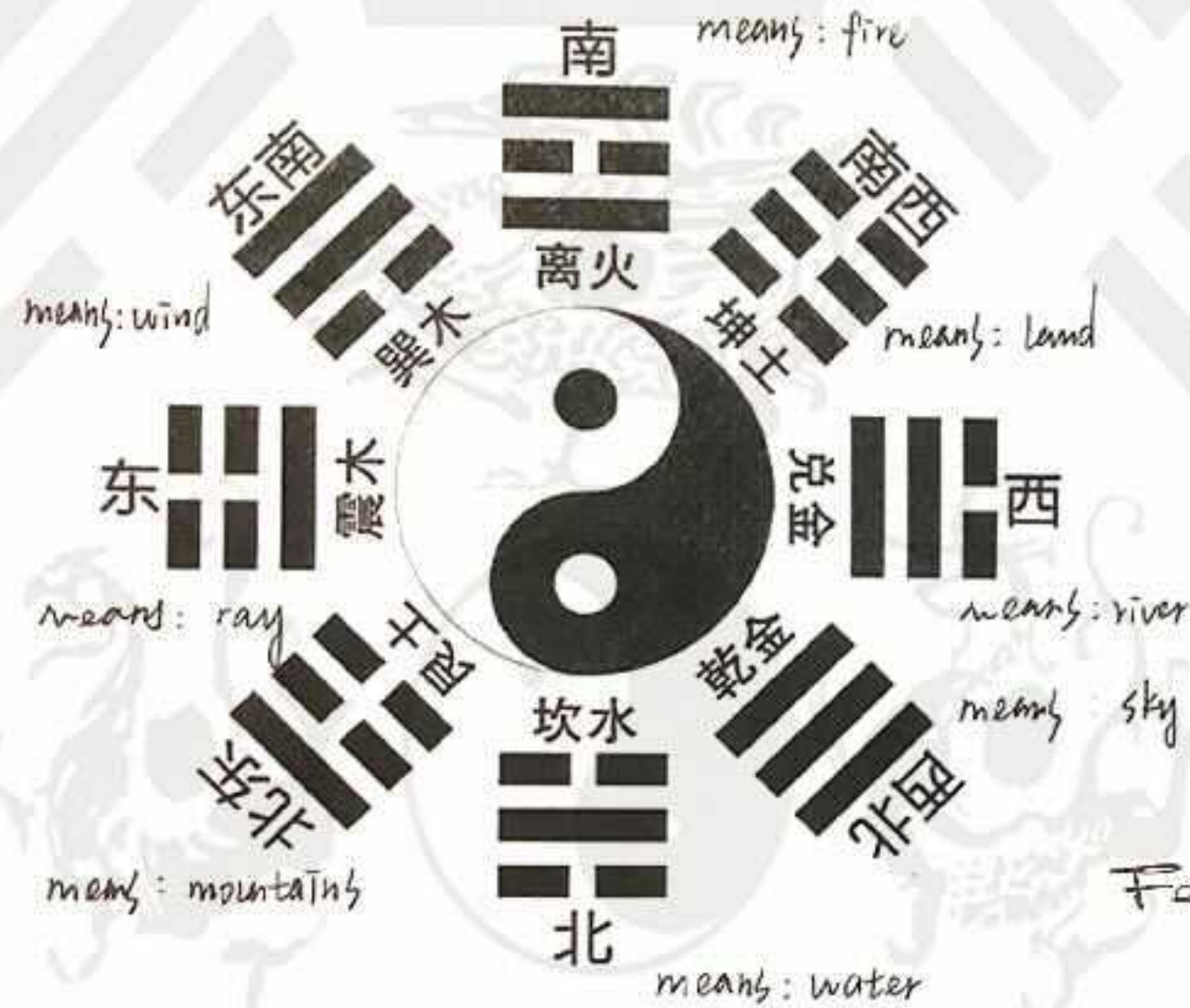
The escalators in Liwan Square look like Taoist incantations.

The fifth floor of Liwan Square is popular suicide spot, with many people choosing to jump there, so now they're locking it down.

The location of LiWan Square symbolize evil in fengshui. Because in fengshui terms, buildings in the position of the white tiger cannot be higher than those in the position of the Tsing lung.



Eight Diagrams :



Feng shui

— colour & type

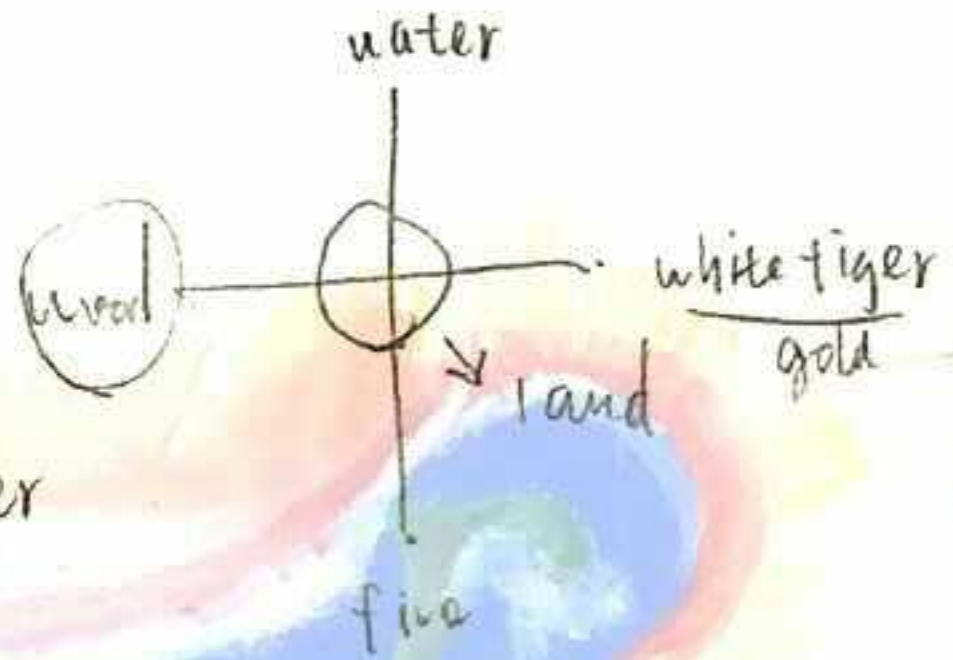
in eight diagrams, the full line represents: positive  
 the broken line represents: negative

The eight diagrams are a tool used in ancient China to distinguish Fengshui by location and environment, it comes from Taoism, It also has four sacred beasts to distinguish between good and bad fengshui





thing lung → wood  
 white tiger → gold  
 rosefinch → fire  
 tortoise → water

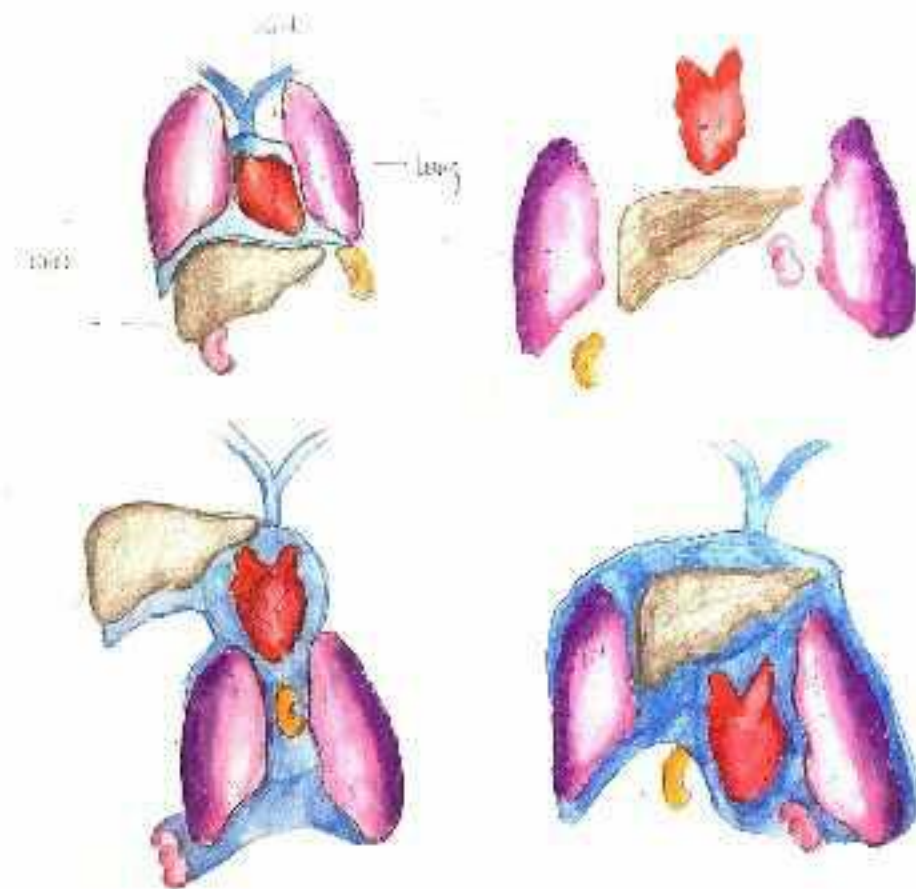
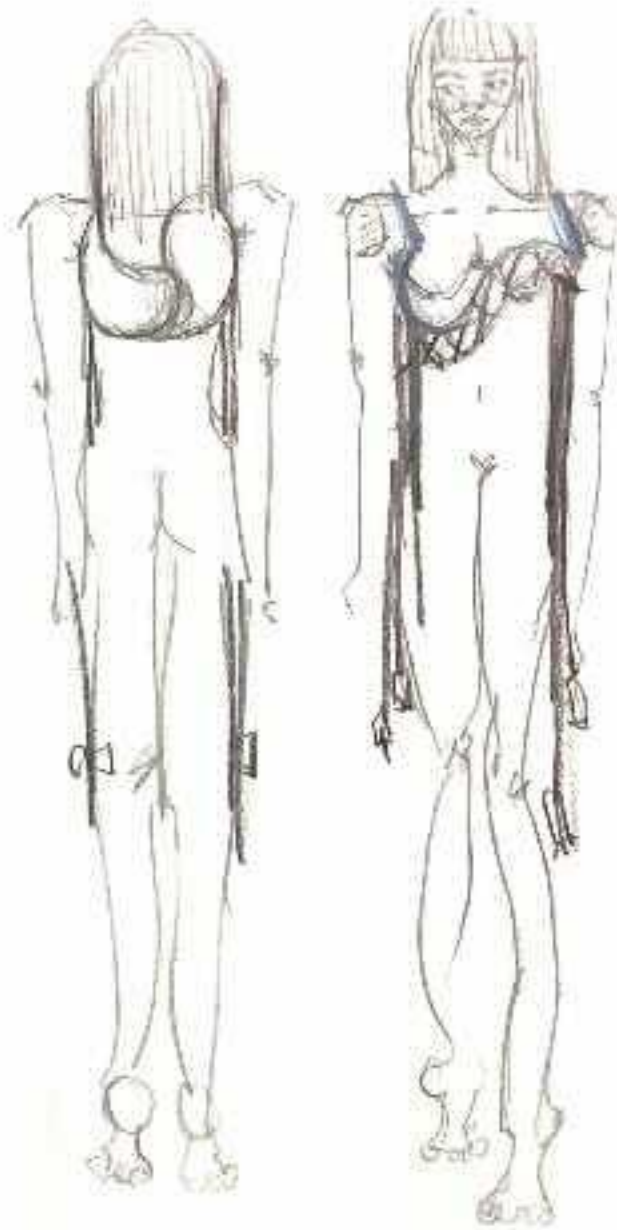


## Fengshui Direction

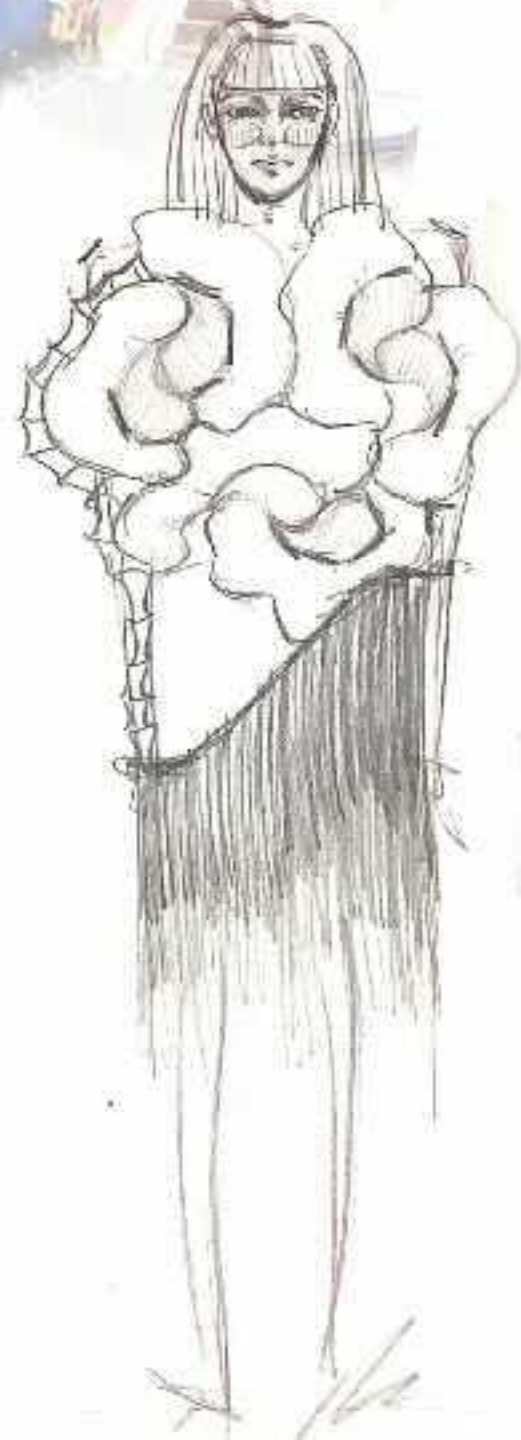
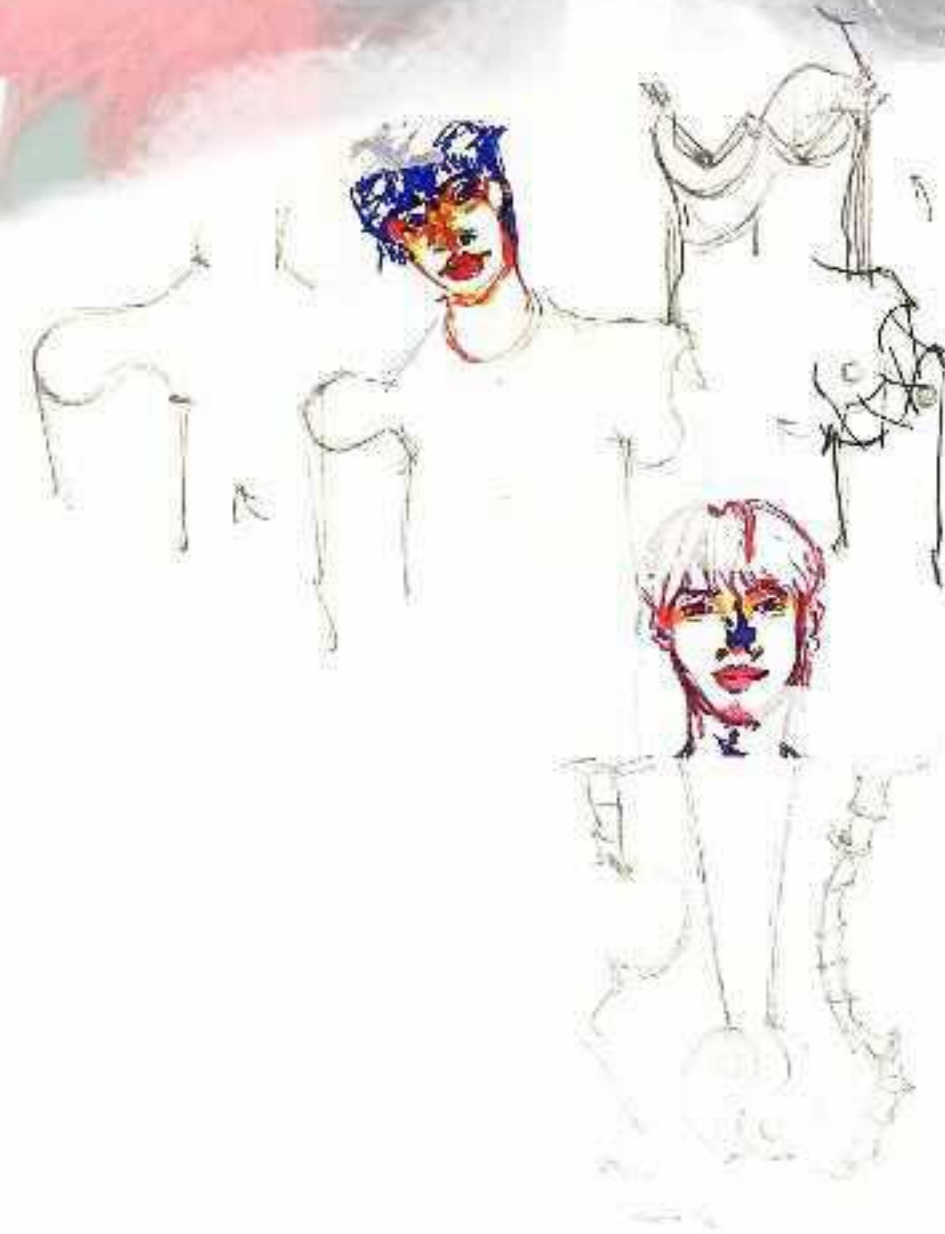
-the symbol of fengshui is dragon and different direction stands for different meaning.

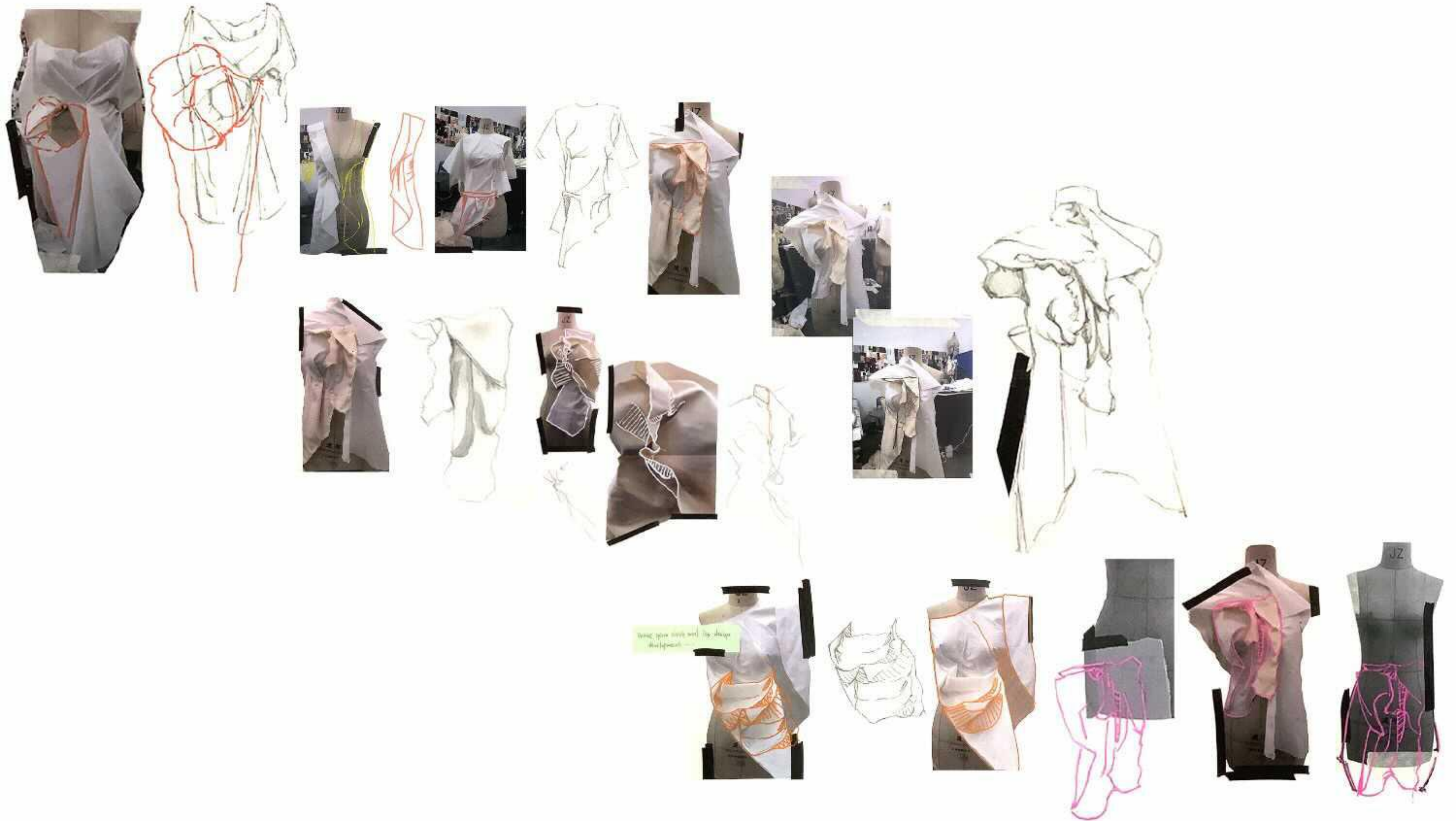


the sense of fringe

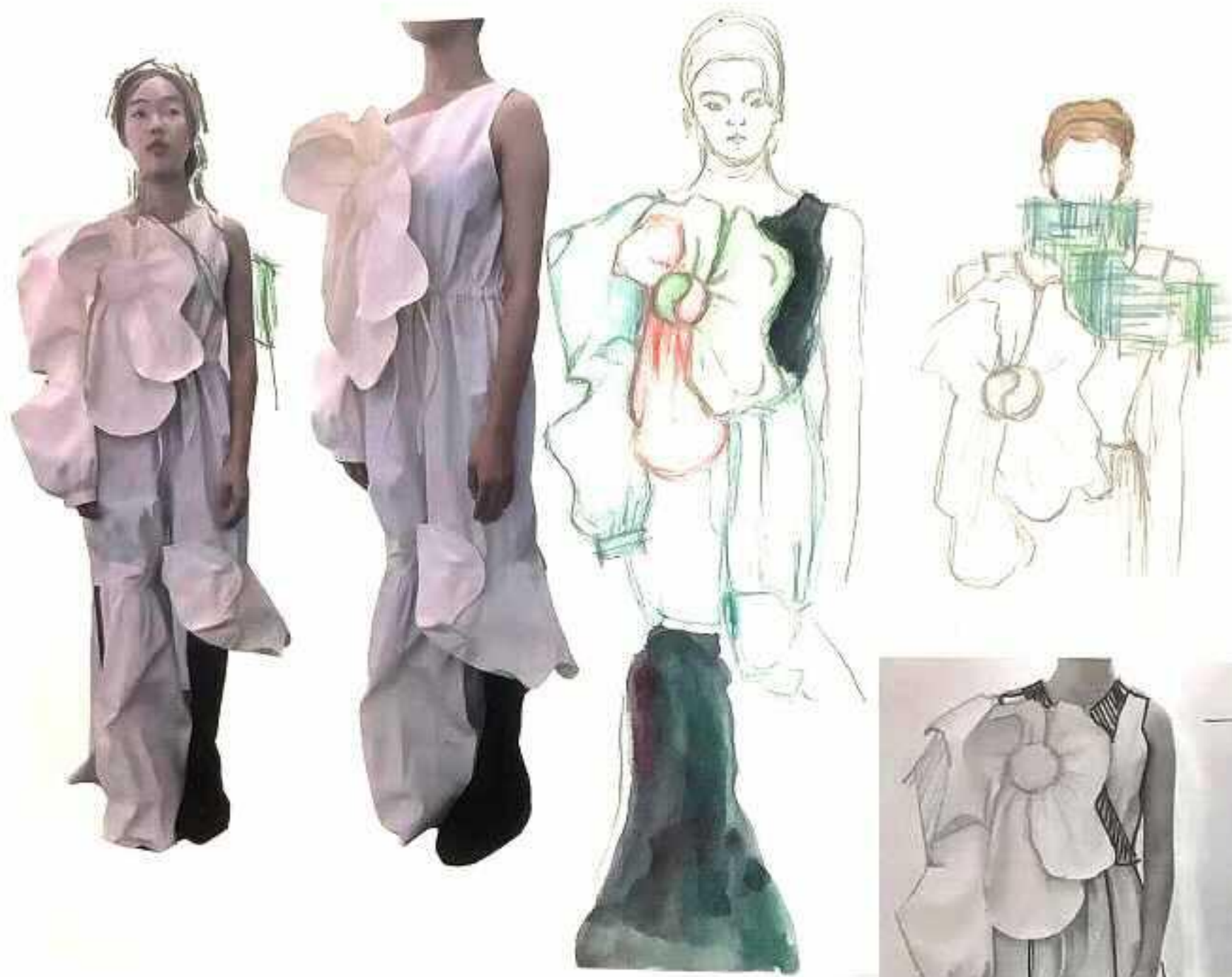


consideration of how human organs affect themselves

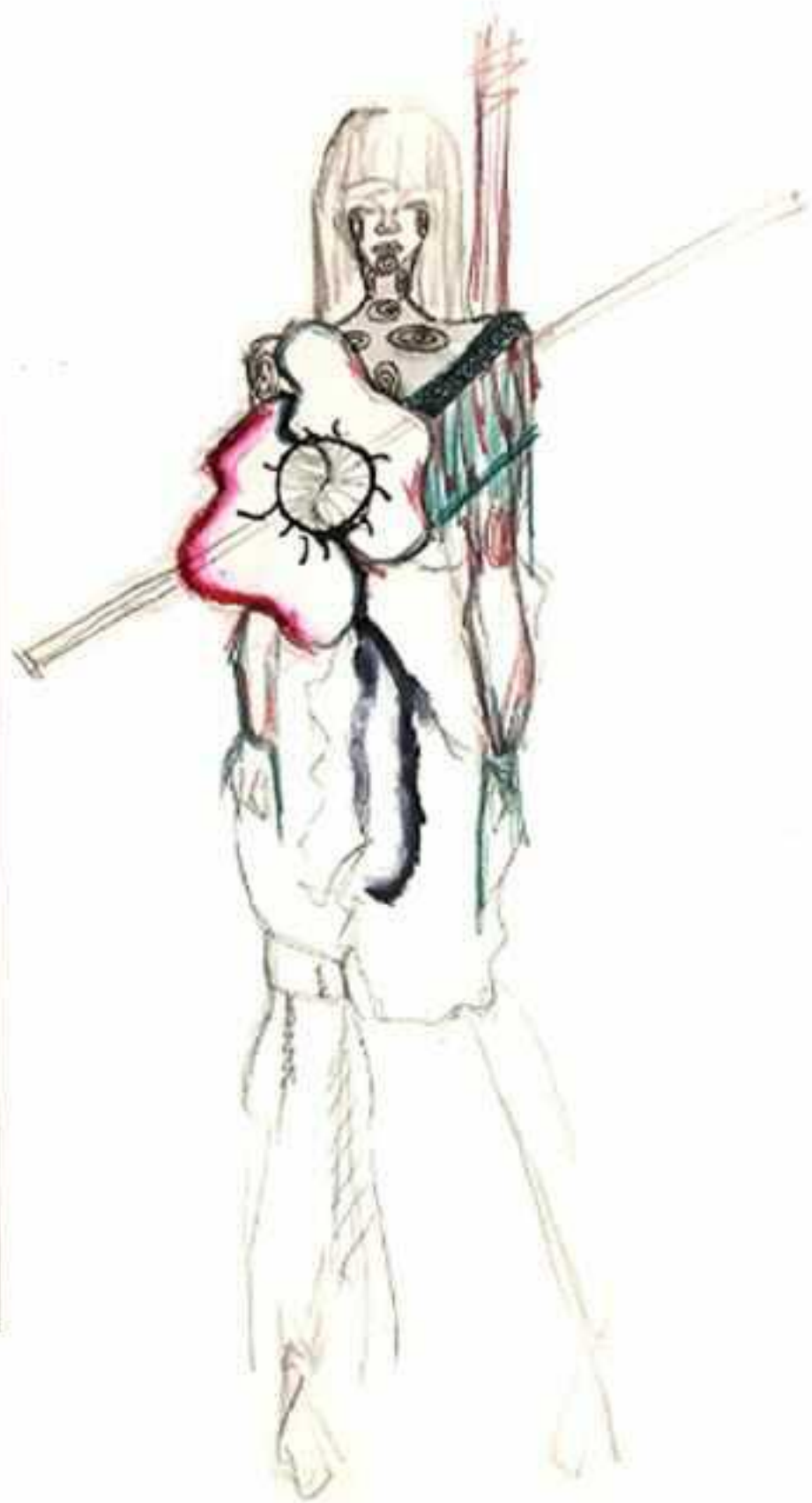
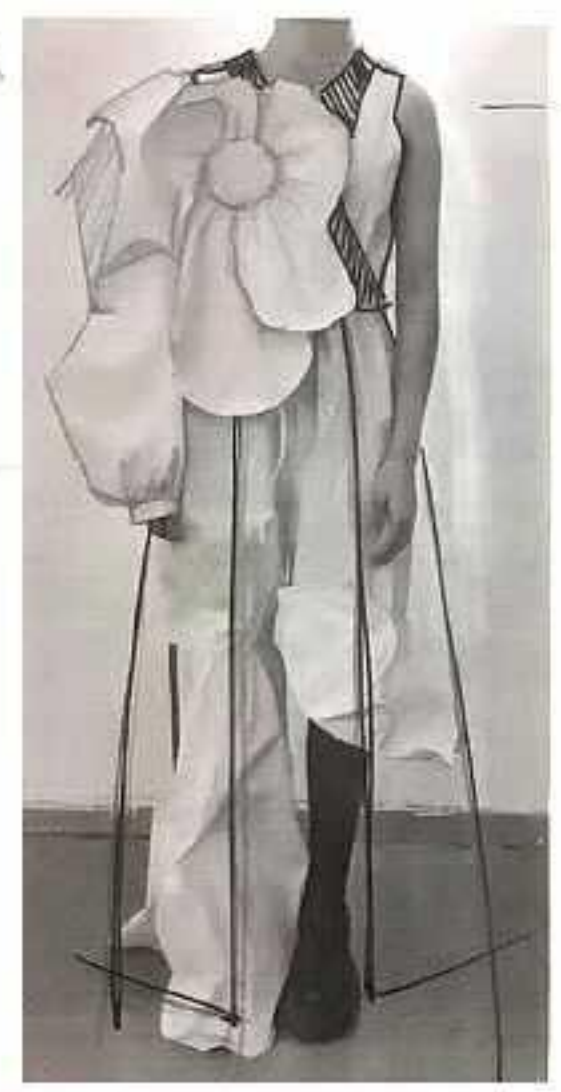


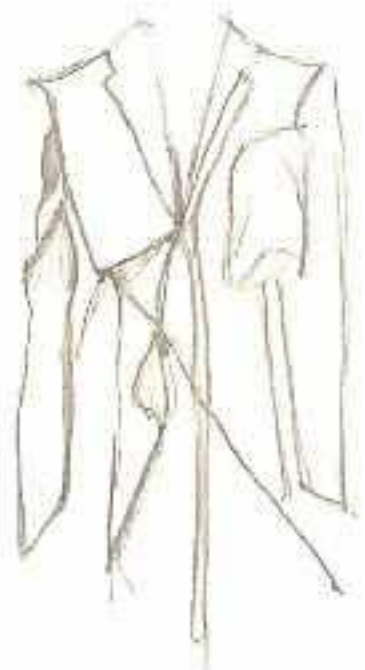
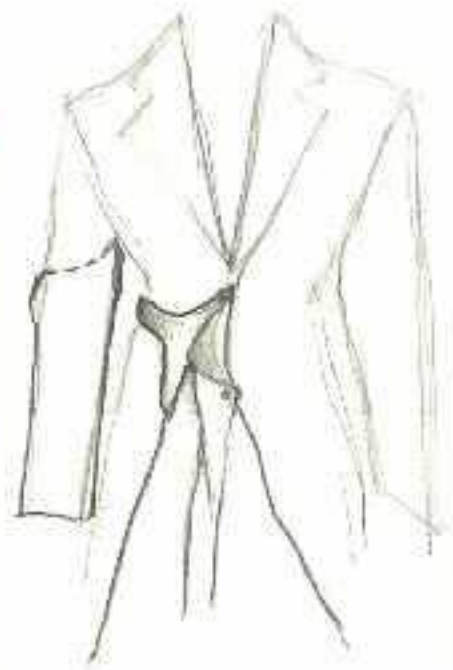


Using your sketch and the design development...



Some further developments about toile

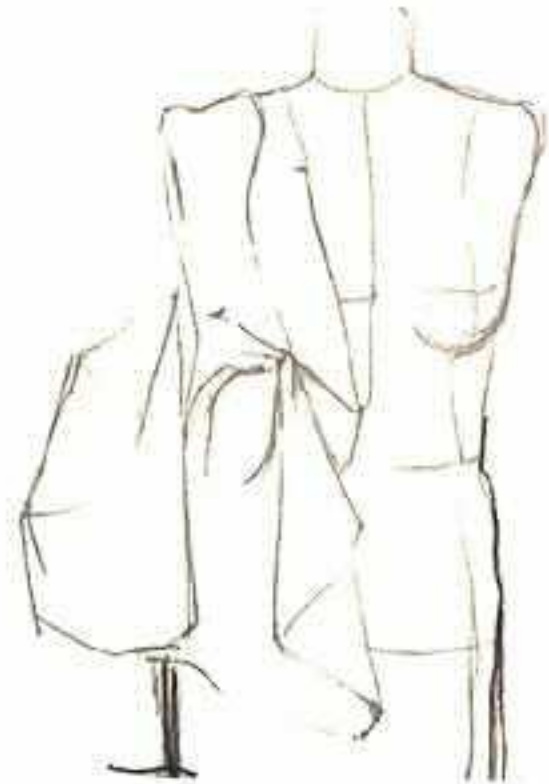




**A remake design**



**It is research from Yin and Yang in Taoism ,  
deconstruction and cutting suit.**







# LINEUP

The final outcome fabric is inspired by the multi-layered gauze clothing of ancient china, which is suitable for grand events and can be worn in a single layer.

