

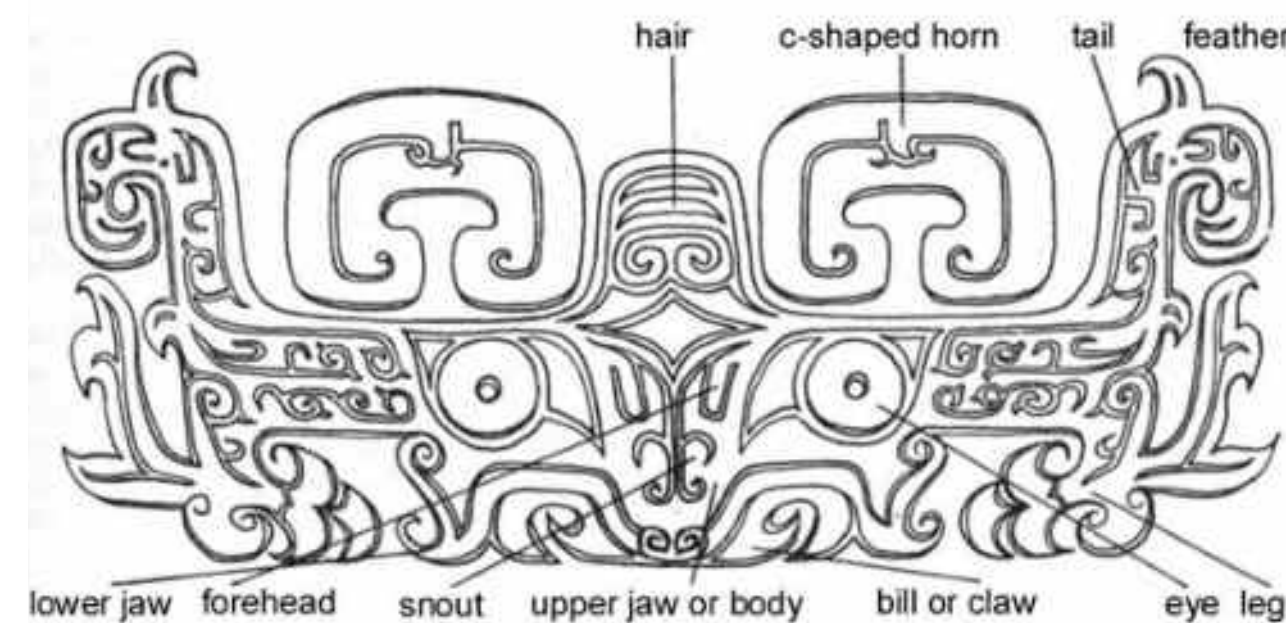
Project 1 - Homeward Journey



Project Overview: In this project, I began my exploration with culture diversity. After doing brainstorming and doing deeper research, I decided to create a story about the illegal outflow of culture relics and their arduous homeward journey. The reason of why I chosen this topic started with an old bronze vessel which named *Min fanglei*. It used to be stolen and sold by dealers illegally for several times and its story of wandering around the world for many years is very dramatic but the specific information is missing, which aroused my curiosity. And in order to satisfy my thirst for knowledge I began to do a deeper development and created story from it.



Schematic Diagram of TaoTie Pattern

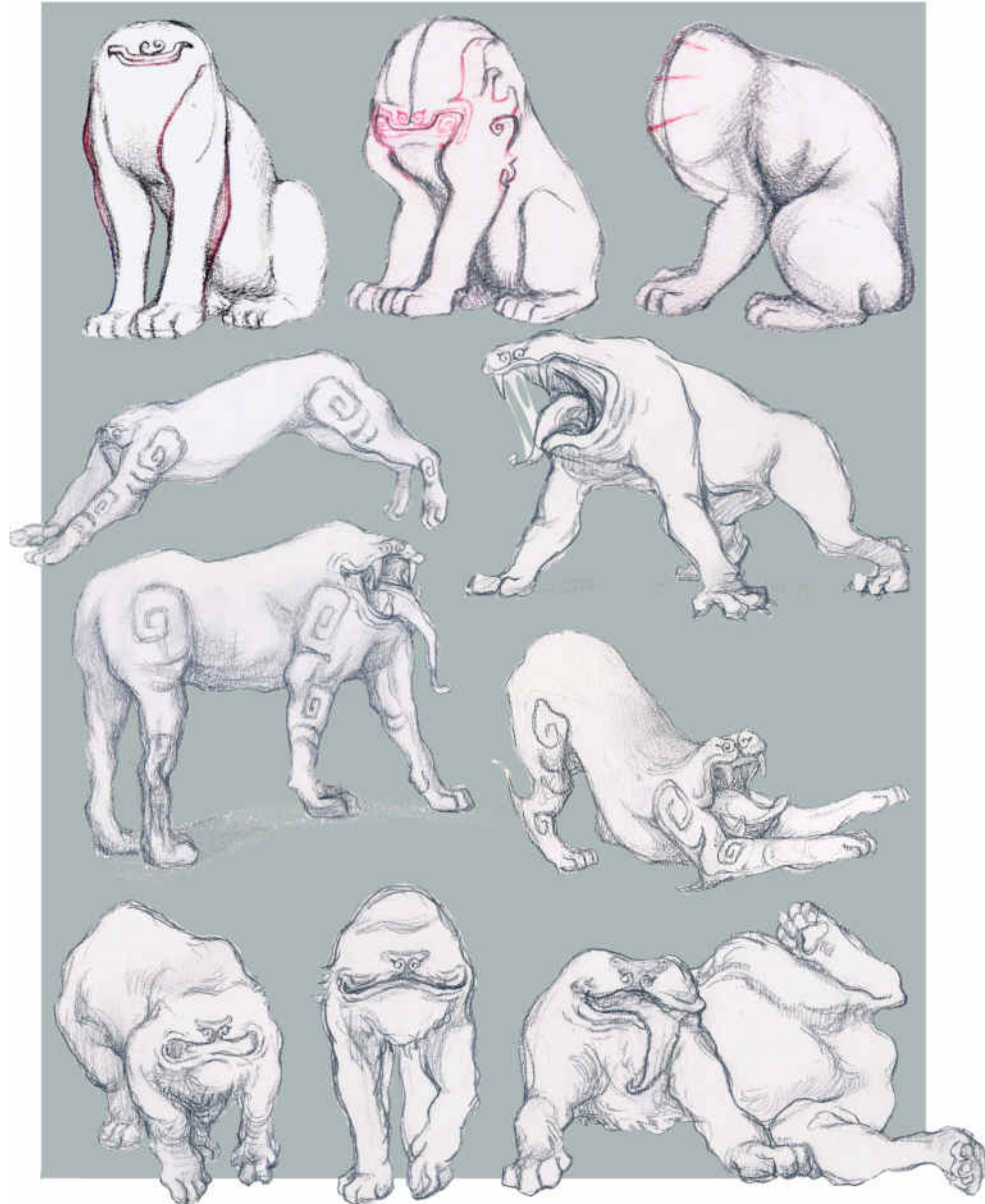


My ideas of the symbiotic beast came from Taotie masks which are a kind of animal pattern, which often can be found on ancient Chinese Shang and Zhou Dynasty ritual bronze vessels and implements. The animal faces patterns on Shang and Zhou bronzes reflect people's worship of God at that time, so it creates a mysterious and solemn atmosphere.

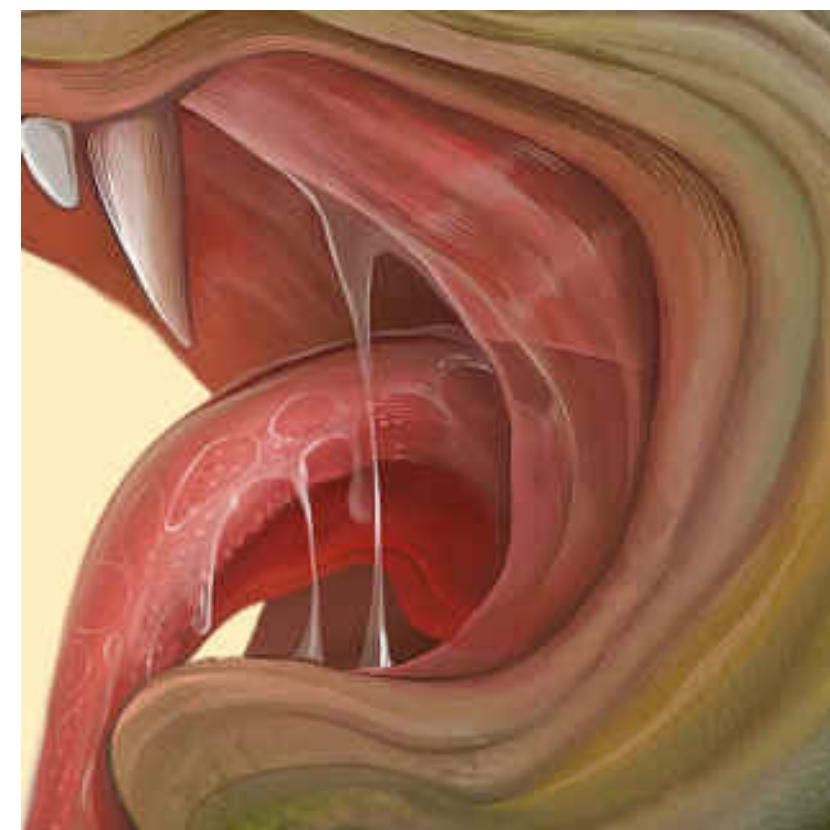
Synopsis : The great navigator found an isolated ancient country with rich resources, long culture and immortal creatures, which is a great discovery. Various countries scrambled to invade this ancient country and ruthlessly plundered the resources on this land. The rich and those in power focused on the immortal power of these rare animals, so they wanted to capture these creatures for research to get the immortal power. After careful planning, they planned to capture a pair of symbiotic animals. In the process of escape, MinQi and HuQi were forced to separate. They finally reunited after being separated for more than a century.

Roles Introduction :

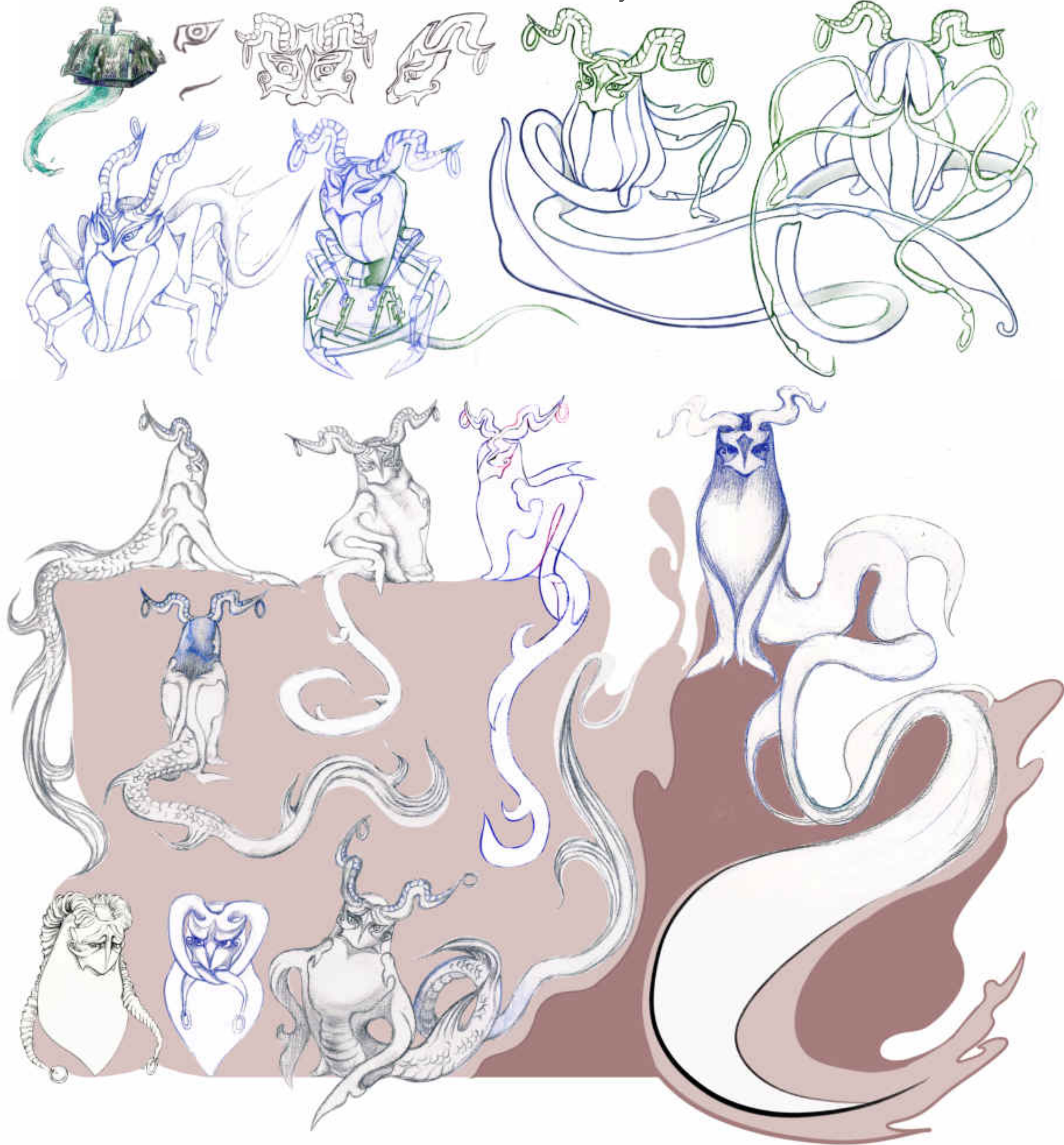
MinQi is the body part of the pair of symbiotic animals, because he plays a major role in movement and eating in the whole symbiotic animal. So he has a strong body and a big mouth. He is not good at observing and thinking, and he is impulsive and reckless.



M
I
N
Q
I



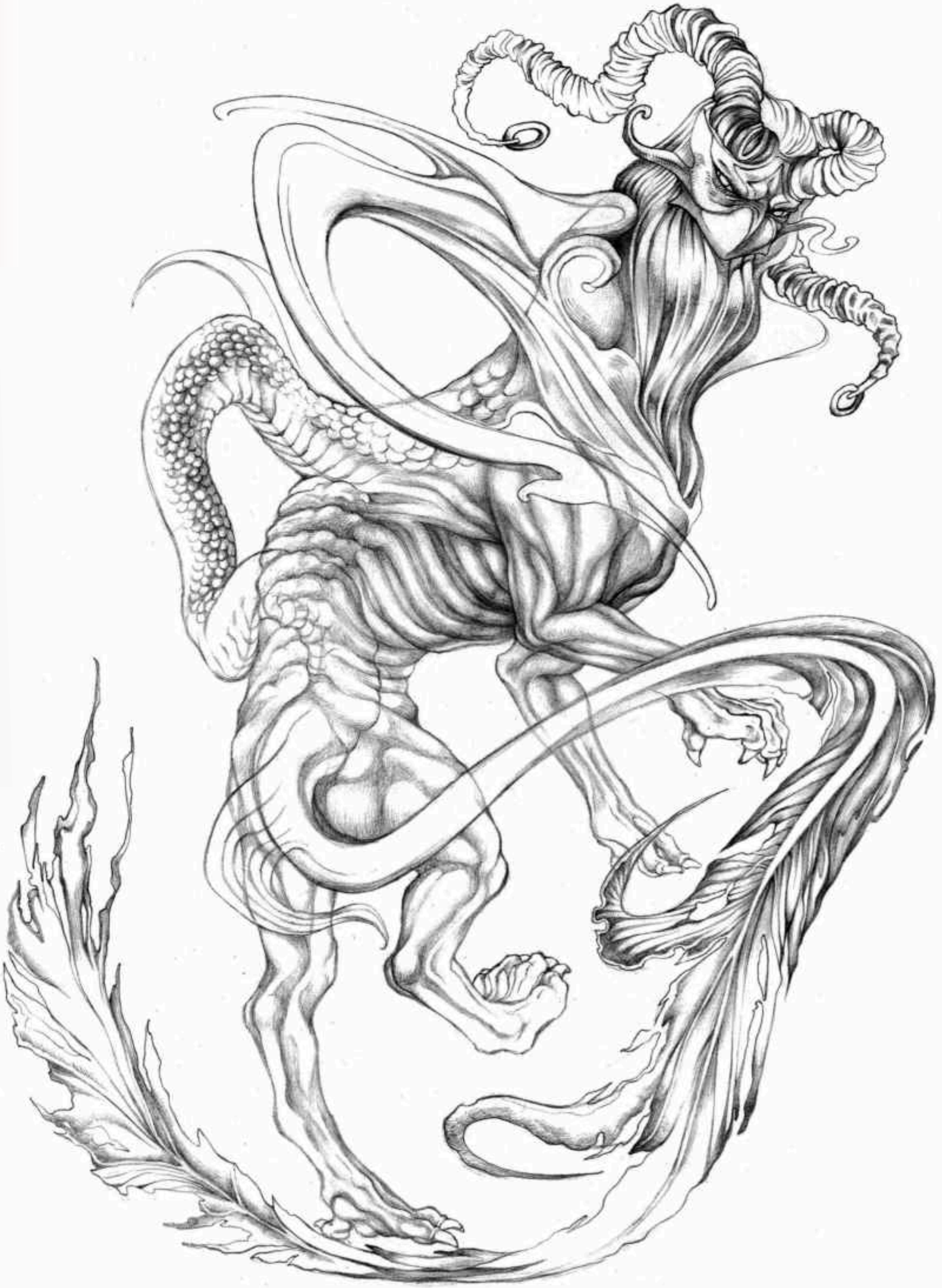
HuQi acts as the brain part of the symbiotic beast as a whole. He is not as good as at exercising like MinQi but better at observing and thinking. It also acts as a tail to maintain the balance of the symbiotic beast.



H
U
Q
I

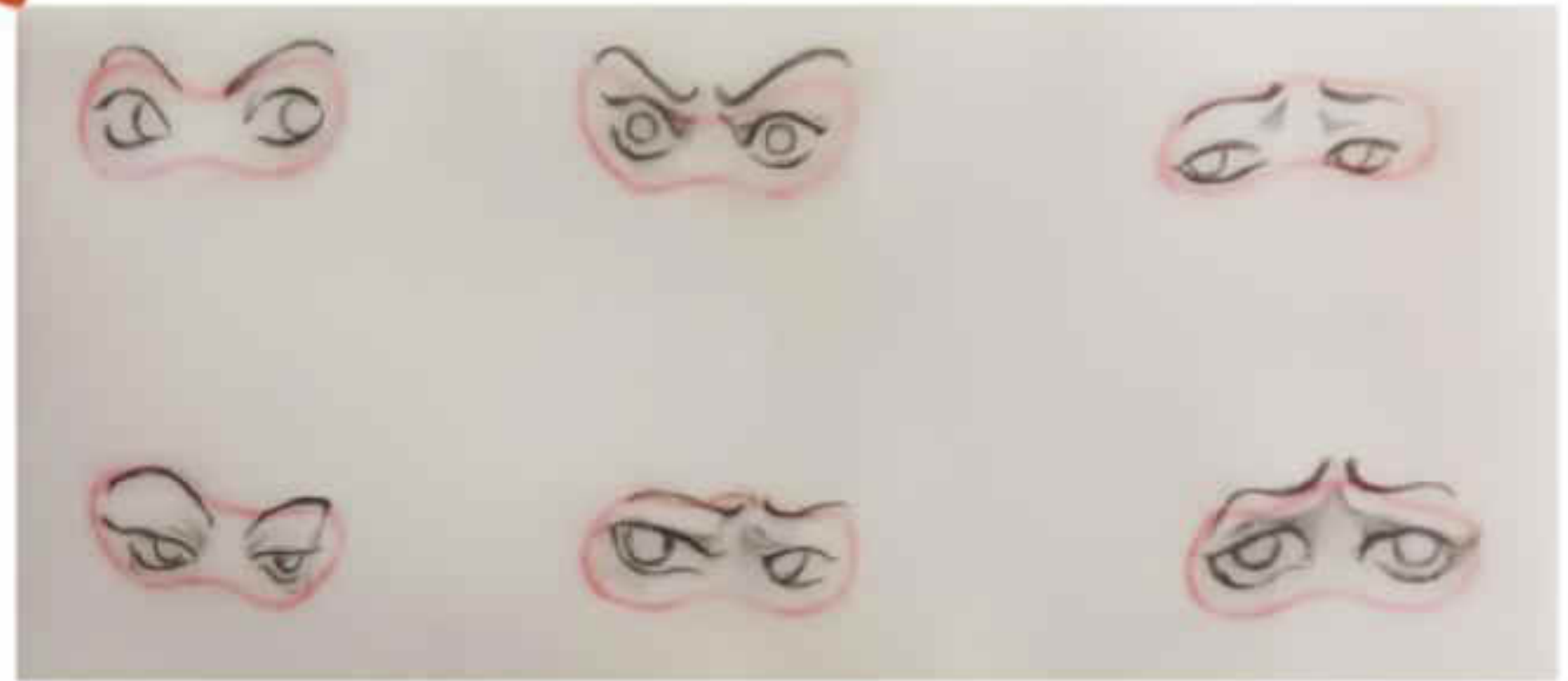


Self- evaluation : I think if I continue to develop, I can do more things related to cultural differences. At present, I think cultural differences have not been reflected in vision, so in the next step, I will try to reflect cultural differences in roles.

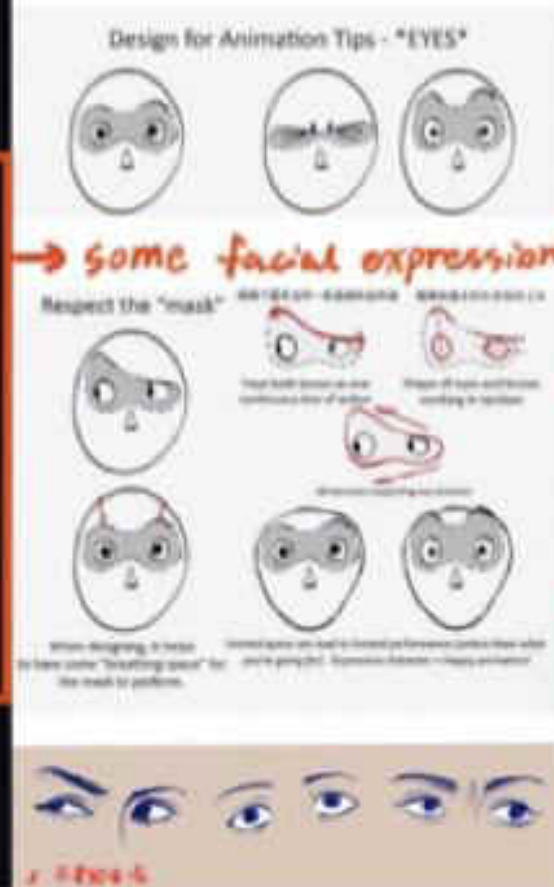


Then I will draw the animation of the character, and I will appropriately simplify the modeling of the character. Although the modeling is very exquisite now, the mobility of the character is relatively weak.





↑ Some sketches of facial expressions.



→ some facial expression I picked to draw.

- I tried to break the boundaries of normal expression.
- Make them more exaggerated more dramatic.

I'm not sure if i've will do any better than I did before, but it's a try, an exercise.