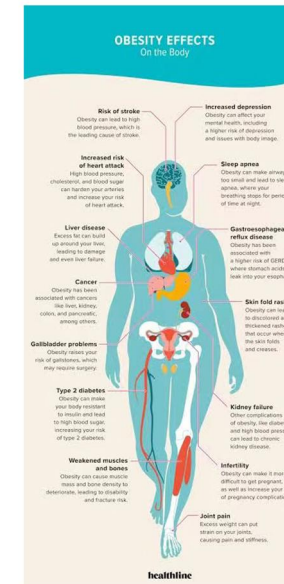
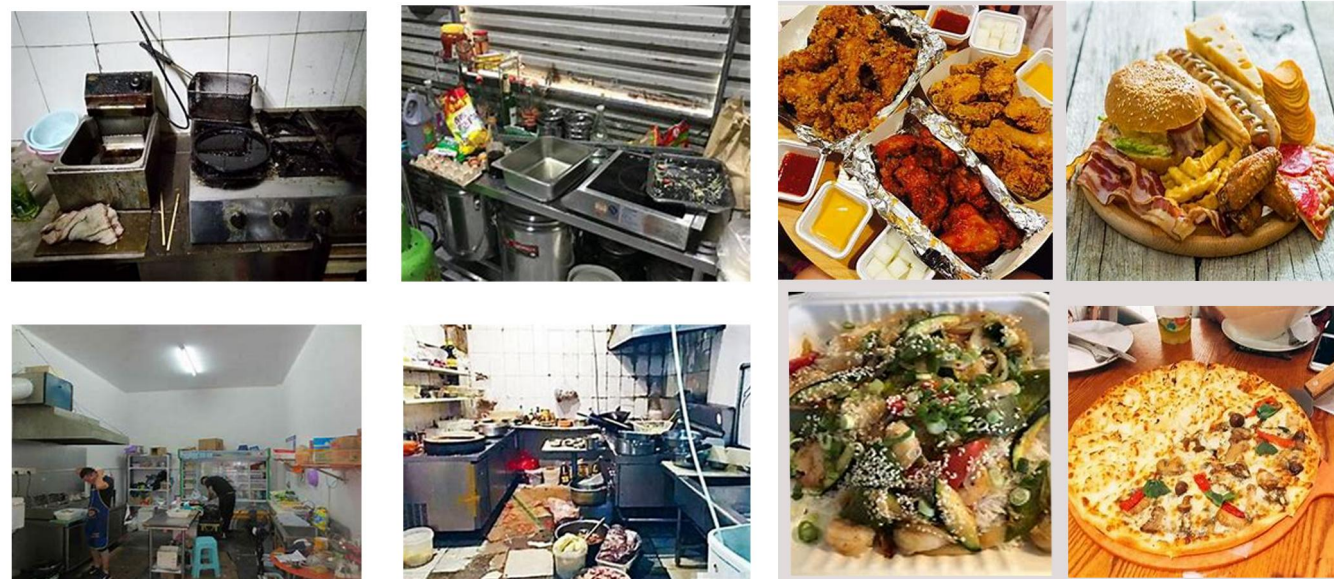


# Project 1: Inspiration

I was inspired by the abundance of take-out shops in China. Those stores affect people's health and choices in society. Lots of people choose to take an order or just grab a bite. Because they're too busy. They need to use the least time to finish their meal. That gives them



## Takeaway culture in China leads to obesity

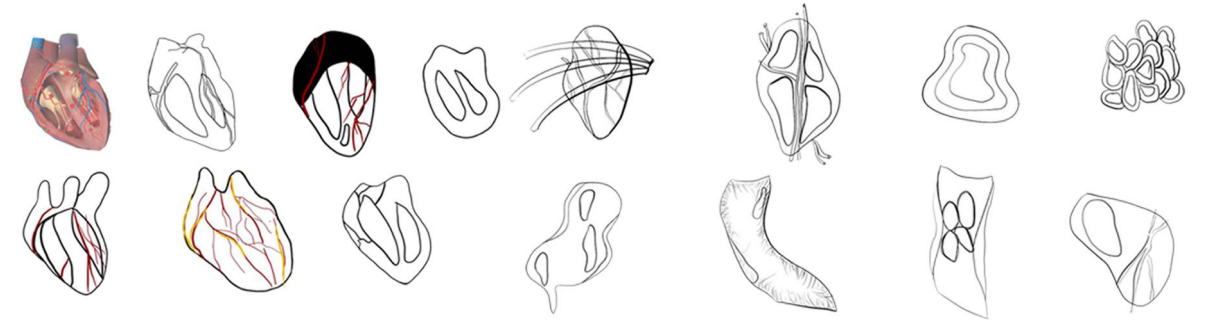
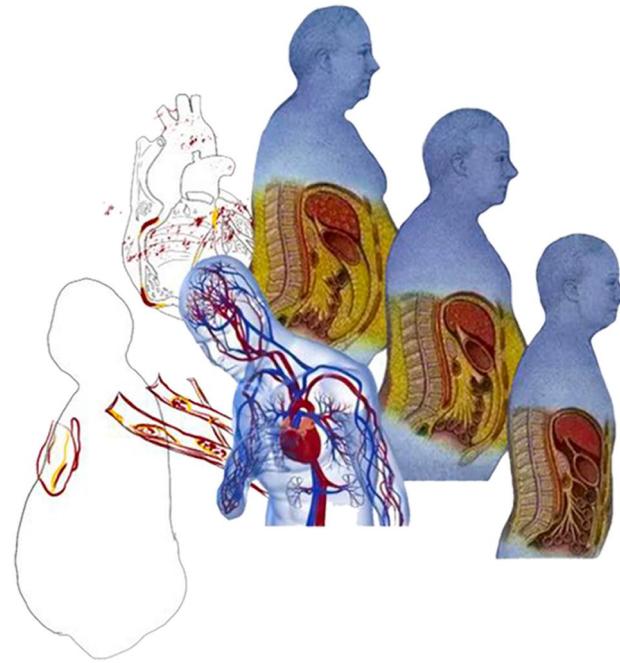


Nutritional imbalance brings the most intuitive change to the figure, and the pathological changes inside the body. Obesity in China - China has become the world's largest country in terms of obesity. The number of obese Chinese men has risen from 700,000 (2.1 per cent of the world) in 1975 to 43.2 million (16.3 per cent), the study showed. In order to realize scale economy, the food industry will produce more deeply processed and delicious food with low nutritional value, which increases the probability of people eating unhealthy food. Some high-fat and high-calorie takeaways also occupy office workers who have no time to prepare three meals a day.

# Developments



*Extract elements from body shape*



*Obesity is the biggest risk factor for heart disease. Such as coronary heart disease and cardiovascular blockages. Blockages are caused by narrowing of blood vessels, or by fat sticking to the walls of blood vessels. I extracted forms from visceral diseases and heart. I tried to make them wearable in different*

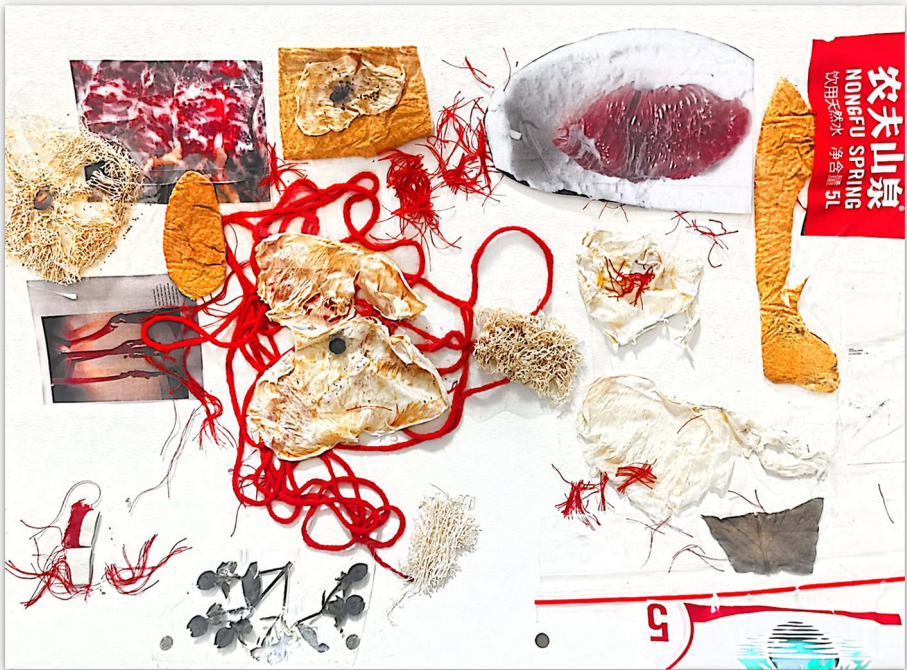


*Extract elements from cream and bone*



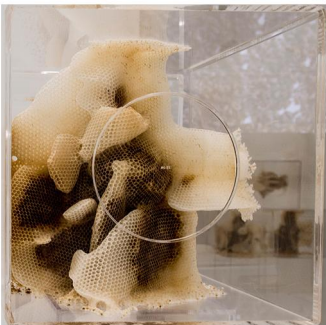
*Diabetes is also a common disease for obese people. Diabetes can cause a variety of tissues because insulin is not produced enough to affect blood sugar. Especially chronic damage and dysfunction of eyes, kidneys, heart, blood vessels and nerves. The lower extremities can fester in advanced diabetes. I used the festering part as inspiration.*

# Organic Material Choice



*I chose to use organic materials because the texture of the second creation is very beautiful, and the texture is very similar to the texture of the gut. Most organic materials are also created using natural materials and foods. I think it's more in line with my theme. So I wanted to work with organic materials.*

## Case Study



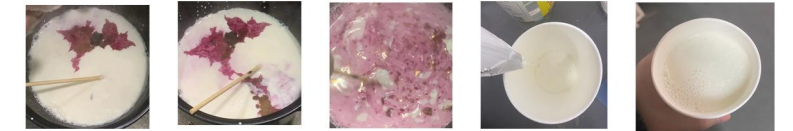
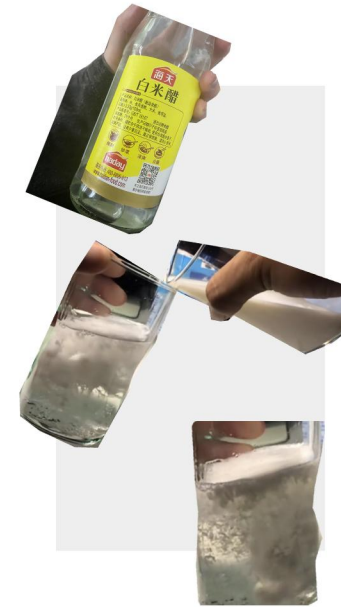
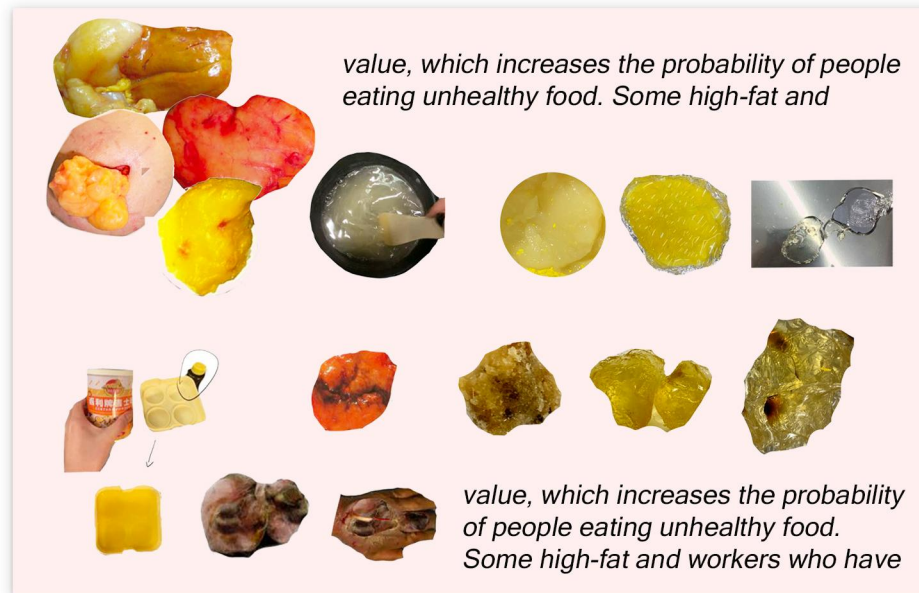
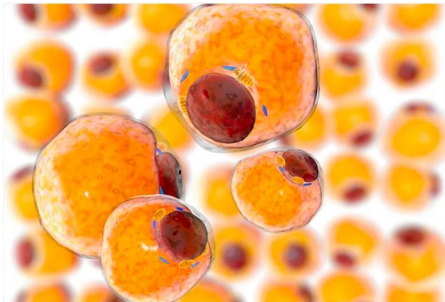
(LEFT) Blazy, Le Grand Restaurant, 2012. Image Courtesy of Galerie Art Concept.  
 (MIDDLE) Ren Ri at Pearl Lam Galleries in Hong Kong. Image Courtesy of Design Boom.  
 (RIGHT) McGuire, Swell, 2014. Image Courtesy of Kate MccGwire. Photo: JP Bland.



# MATERIAL EXPERIMENT

## Gilliding

Different ingredients and proportions of the gelatine material will present different states. I made many materials with different hardness and thickness using gelatine and glycerin.



## Casein plastic

In fact, this ingredient is cheese. But cheese is a fermented and processed food. Casein is the precipitate separated from milk by the addition of vinegar. When it dries, it's a hard plastic. Very easy to carve. And it can be mixed without drying. But the downside is that it doesn't smell very good.