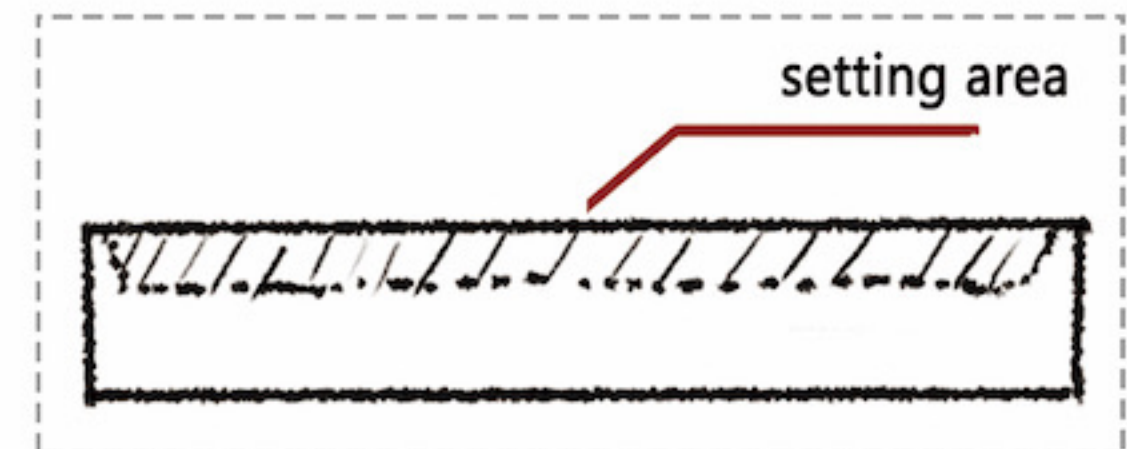
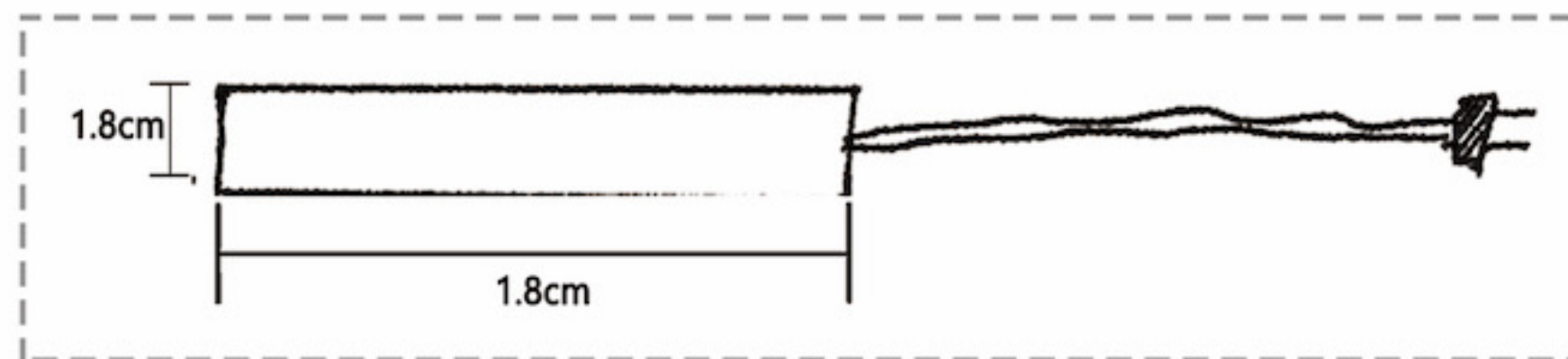
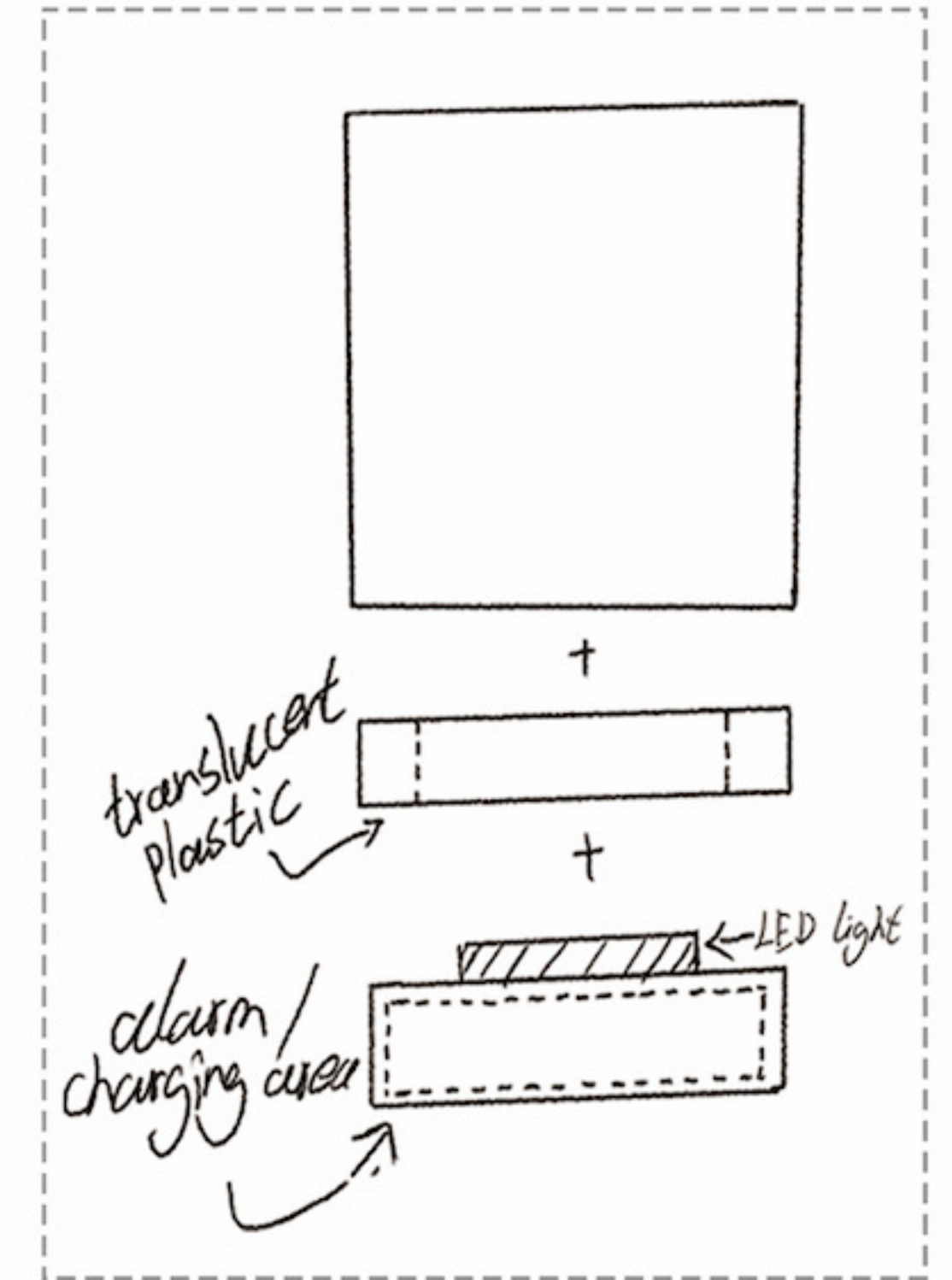
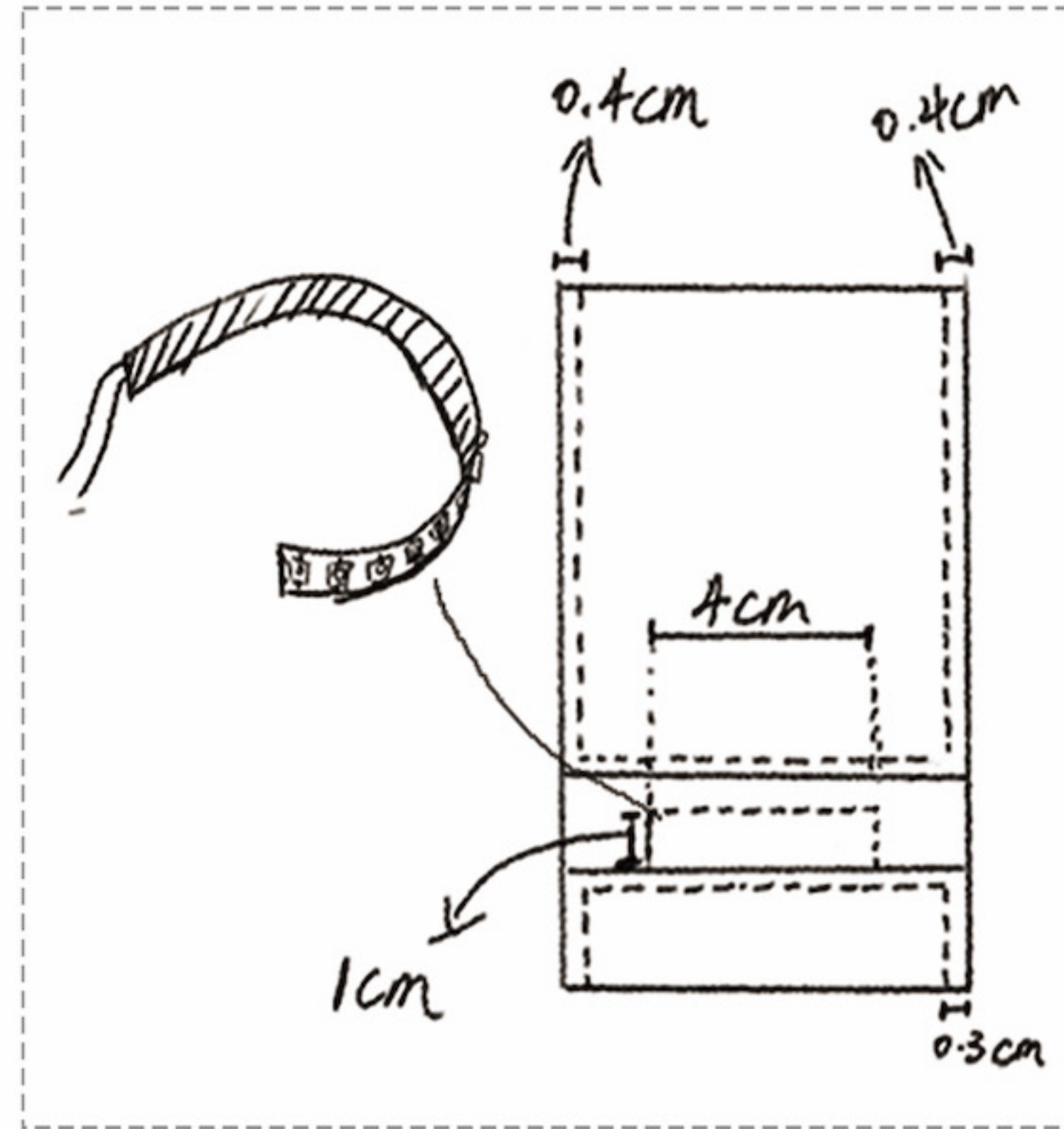
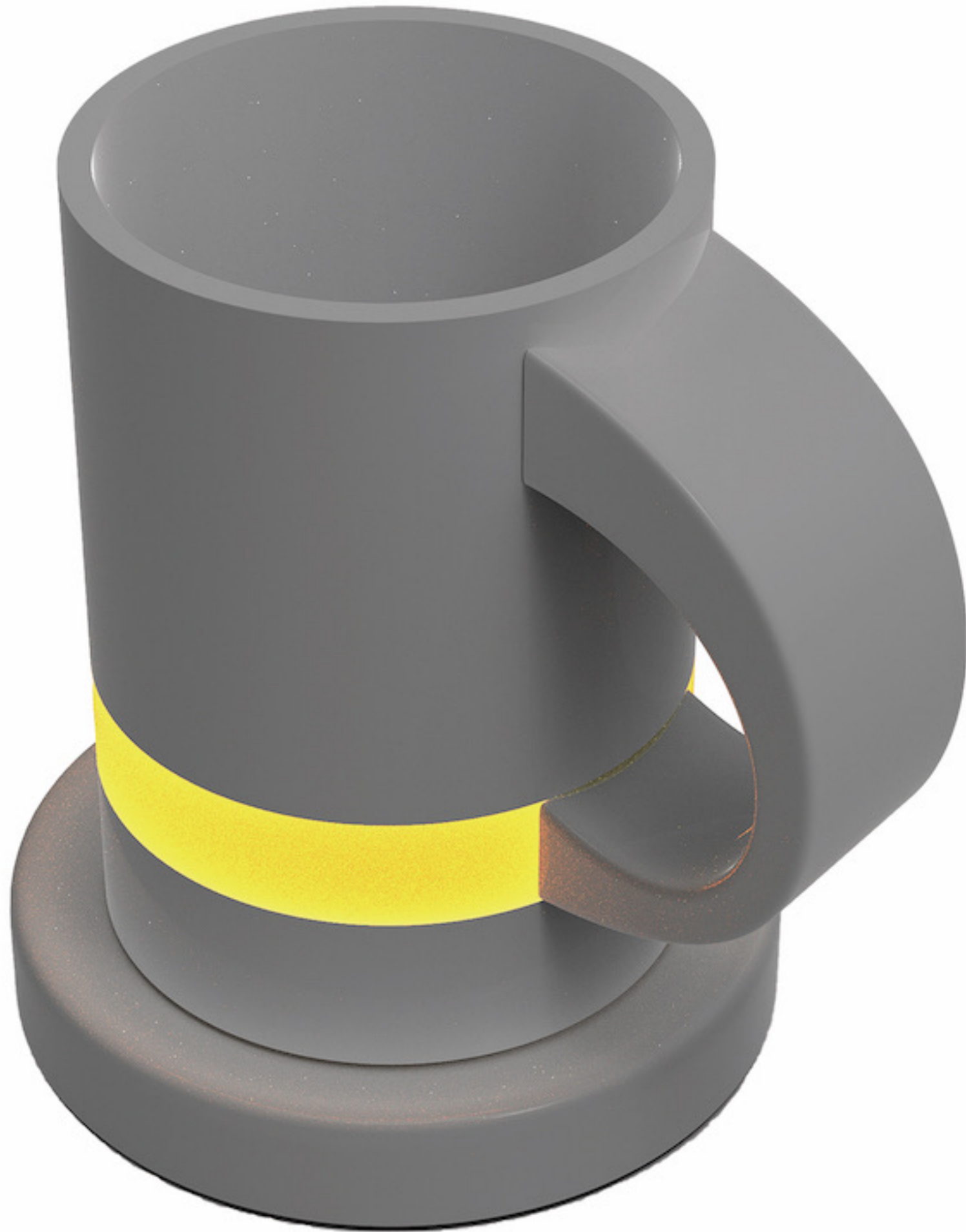


# QUARREL ALARM



# Product reseaech

Be the third person durring a communication.



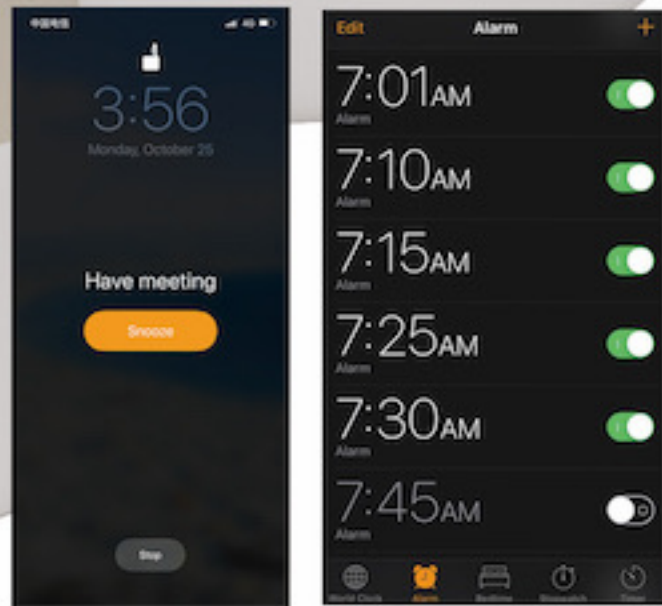
Debate bar



Change the derection when gave the idea.



## Alarm



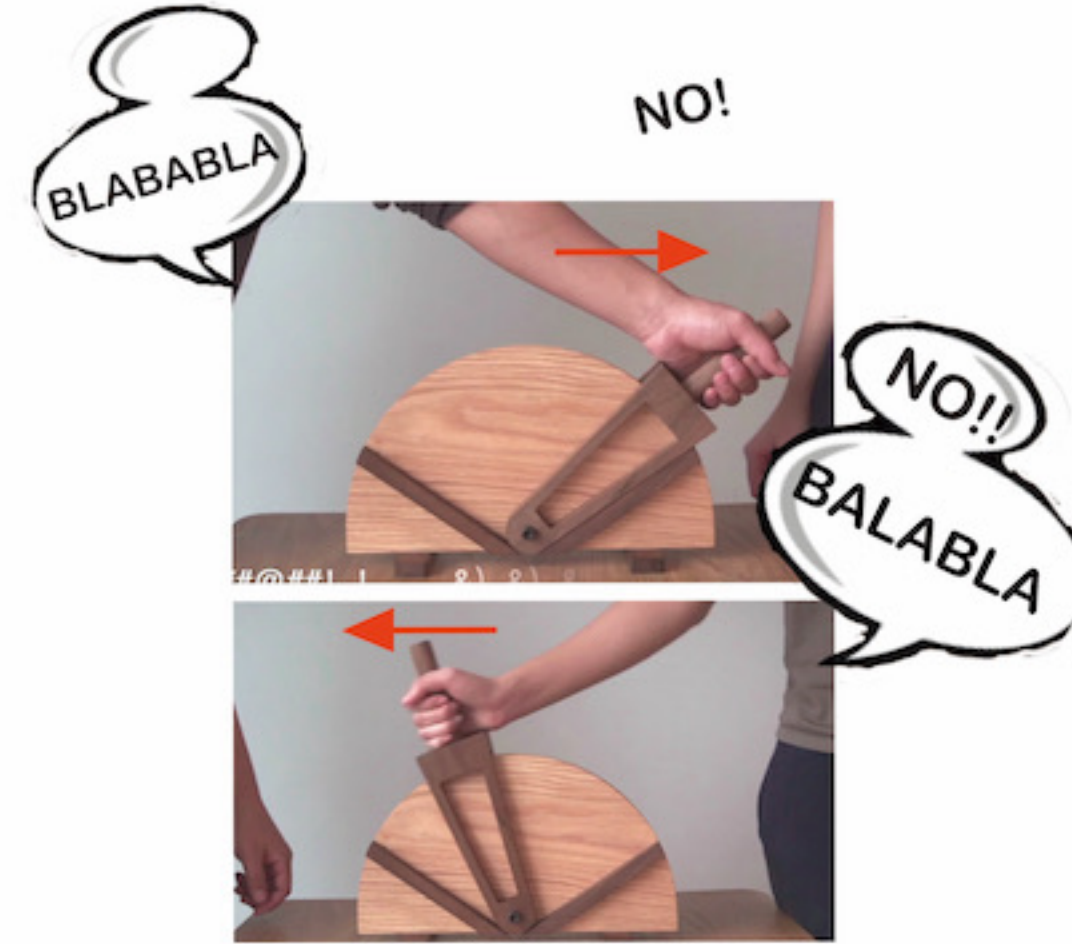
The alarm can remind you what you gonna do or let you remember somethings.



Both kind alarm can make noise for remind us somethings

The alarm can avoid user late for somethings. The method is **make noise** when is sleeping

## Debate bar



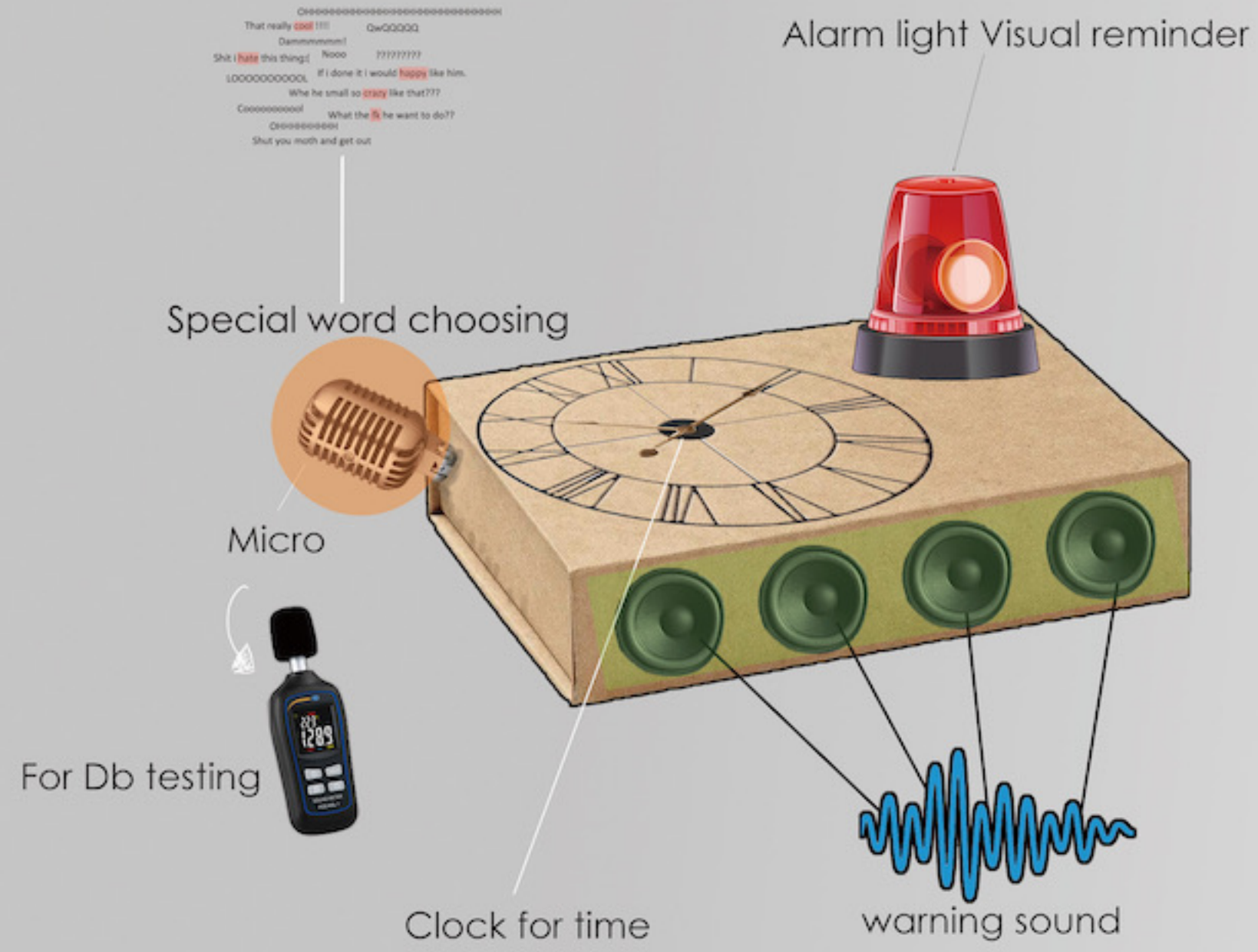
In a **intense communication**, if every know who's round now then it **can avoid many dispute**. So like the **debate bar** it can be the **Fairness and Rules** during the intense communication.

## Summary

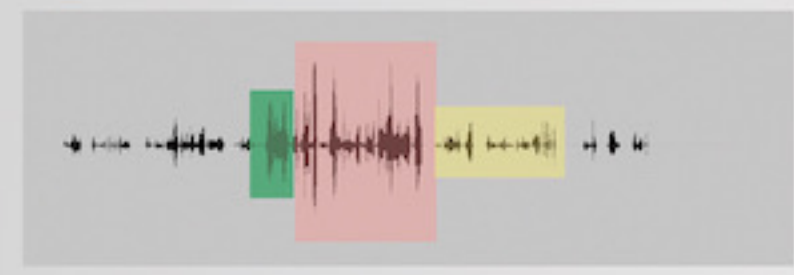


Thre are two things are important in this project, one is the voice second is the clear round for each talking part.

# Concept/funtion



## Alarm determine



- The alarm will make light and sound to remind.
- The alarm will make hurried voice to termination.
- When they become calm from the quarrel, the alarm will stop and the light also will close.

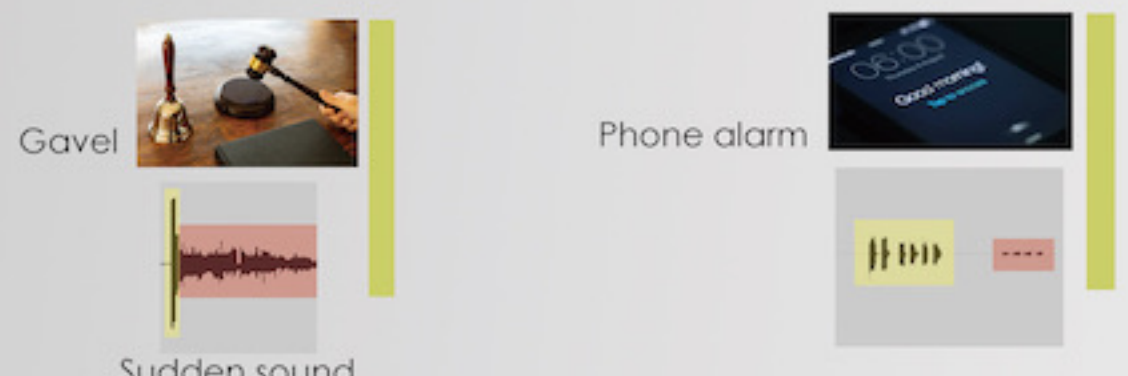
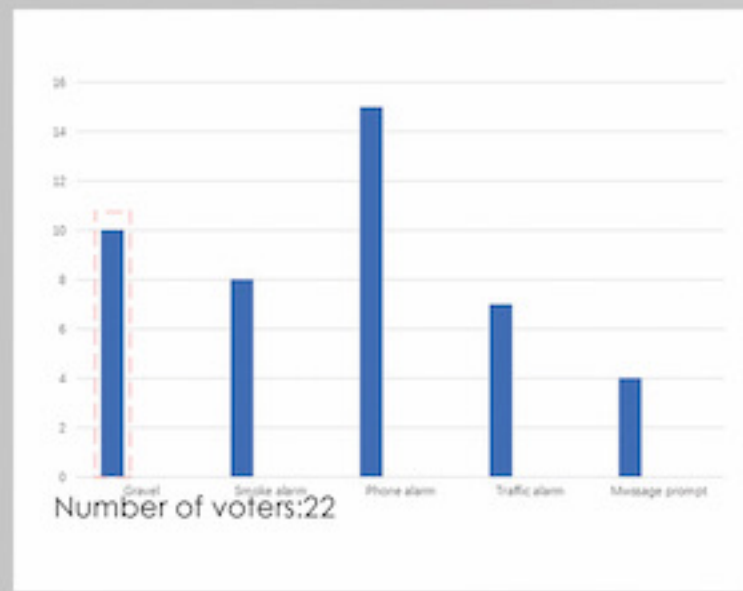


# Product combination



Cup is a daily stuff, it let people drink water when people feel thirsty, so that it usually appear in some conversation environment

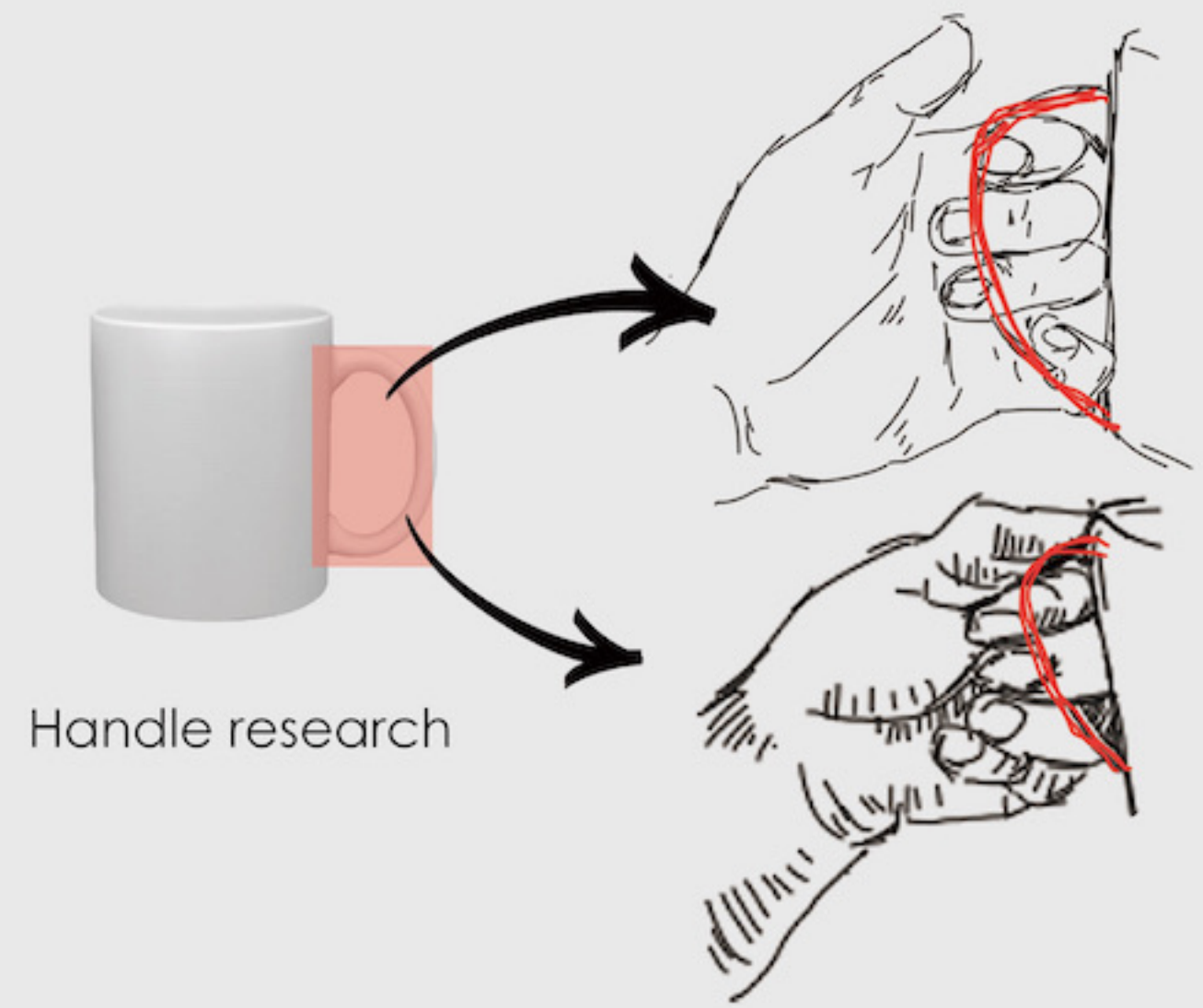
# Sound of alarm



I did a questionnaire to understand people's sensitivity to different sounds

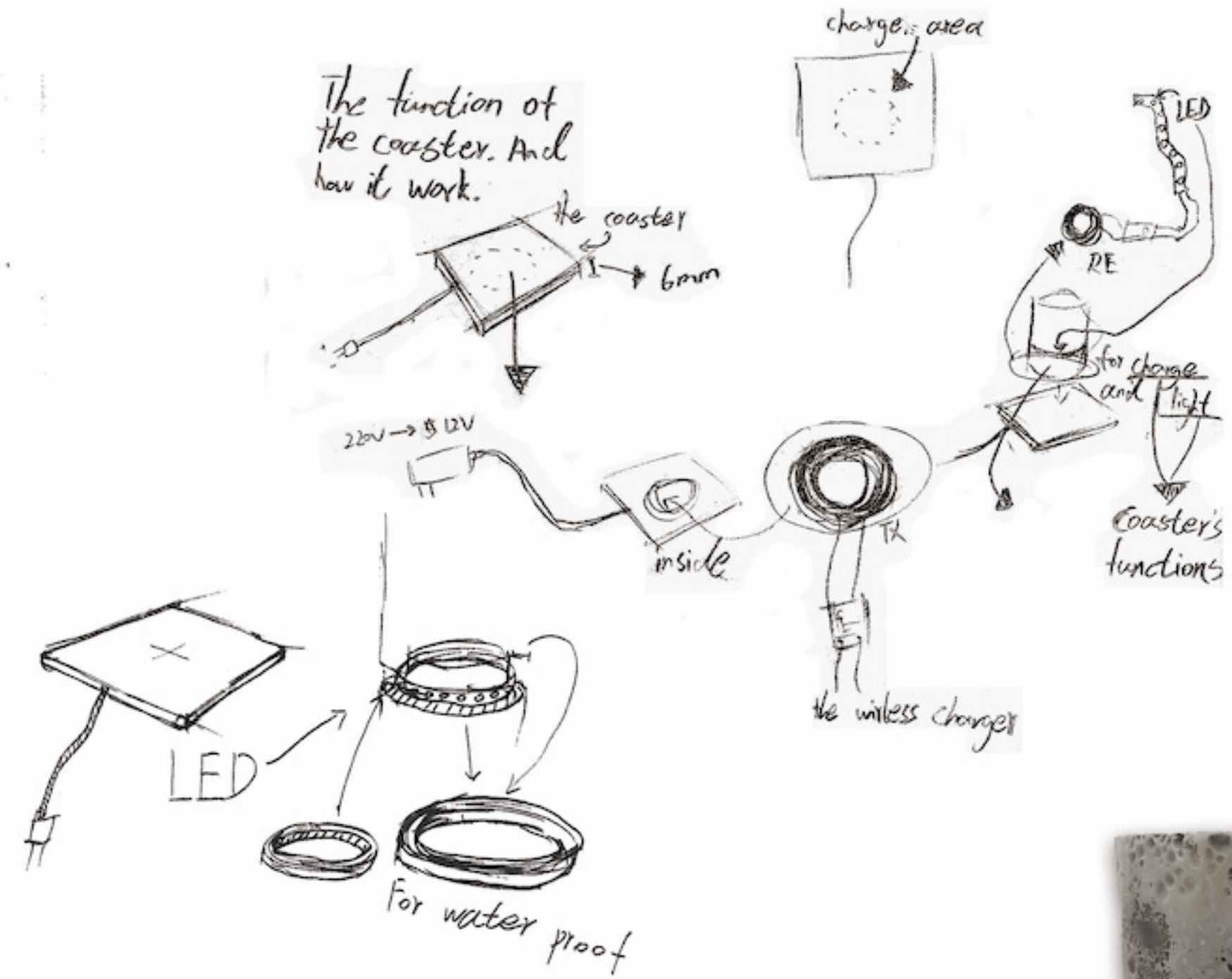
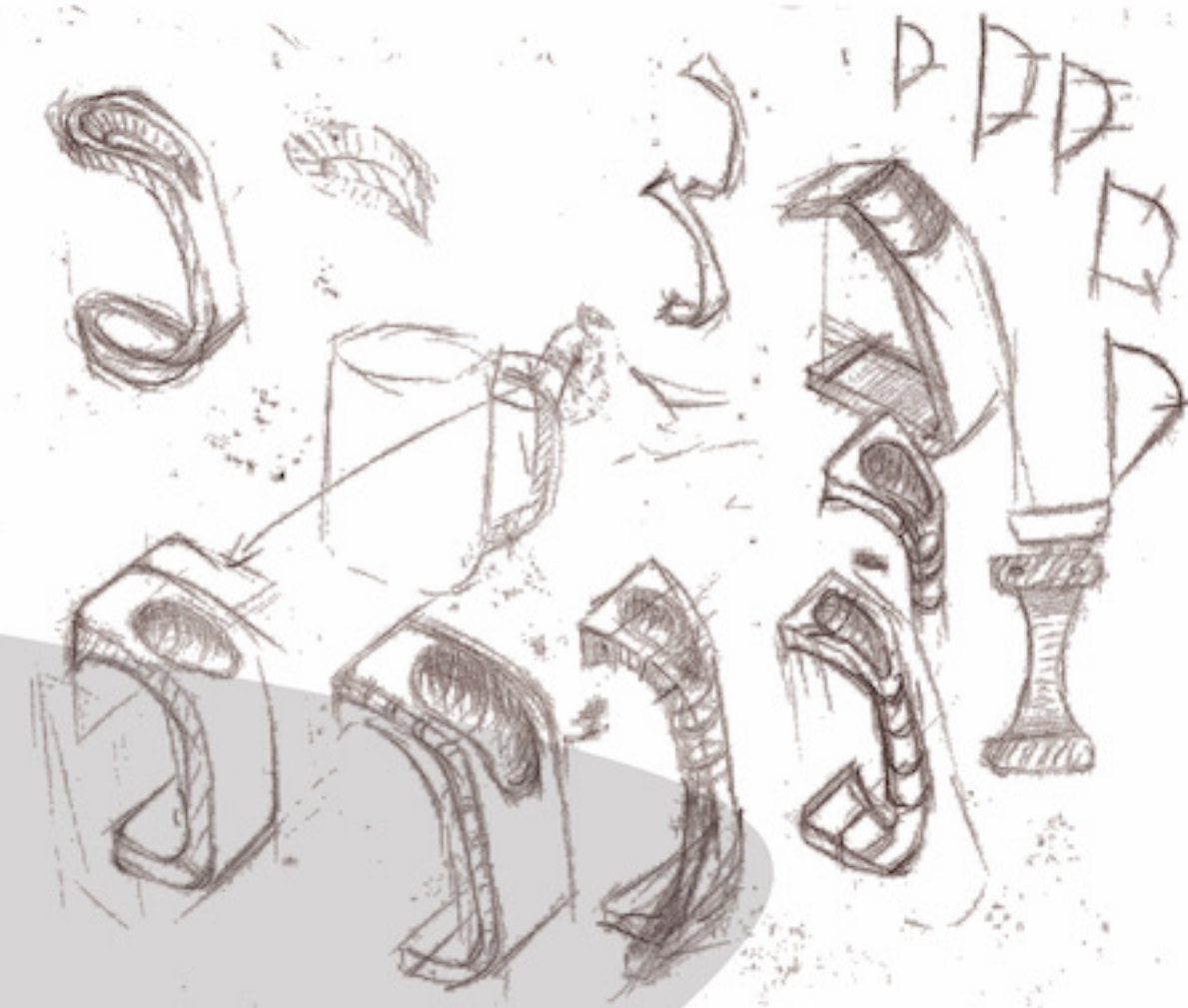
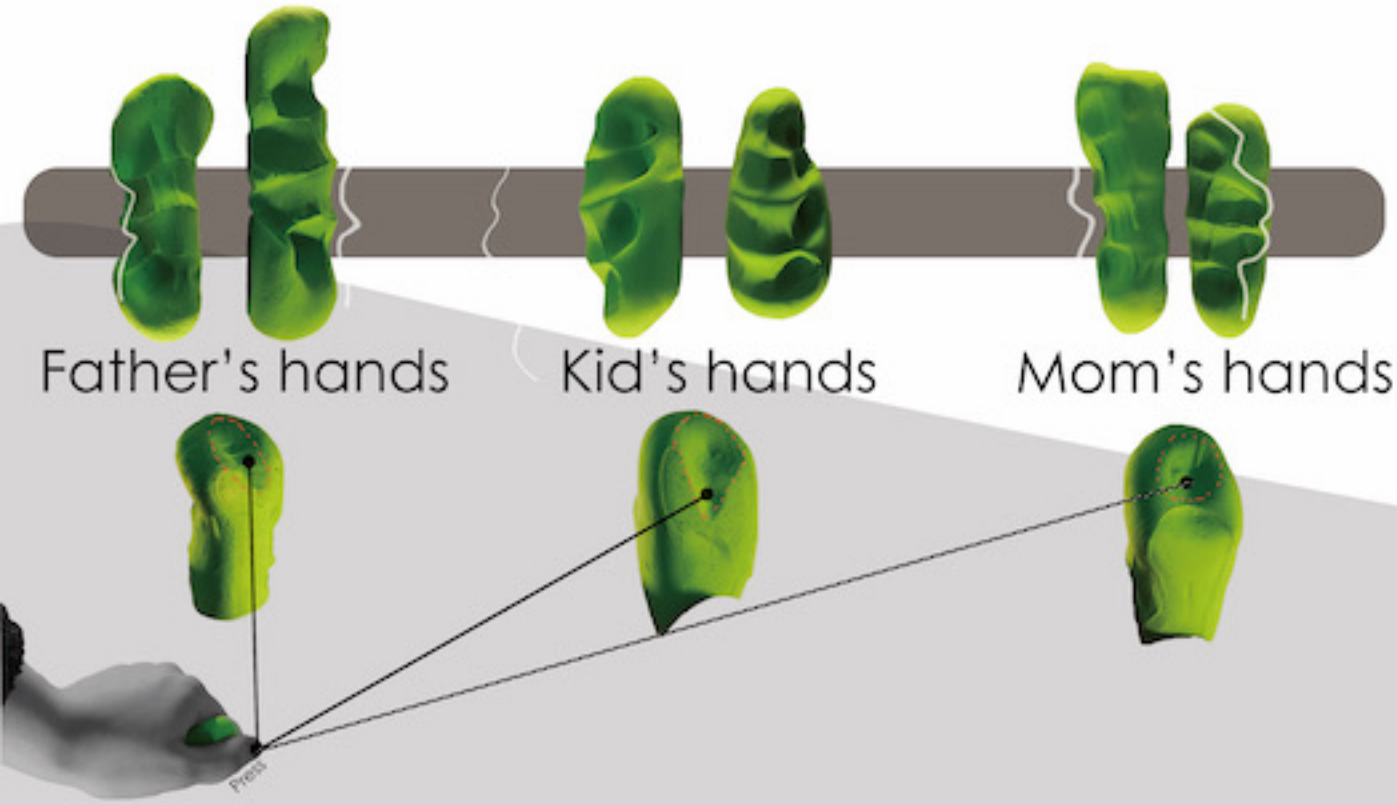


So I decide making a sudden sound with a short echoes like the gavel and also is a series alarm sound.



Handle research

# Drafts and models



## Charging base

The alarm needs to use batteries, and the maintenance of electric energy needs to be solved. I added a base and added an additional function to the product, so that users will actively put the cup on the base to charge and use the additional function

When people want to drink some water at night they usually need to turn on the table light that can look for the cup. But raise the light in a dark environment suddenly is really let people feel uncomfortable.

So that, what if the cup can make the small light in dark environment that may let people find the cup faster without turn on the light.

