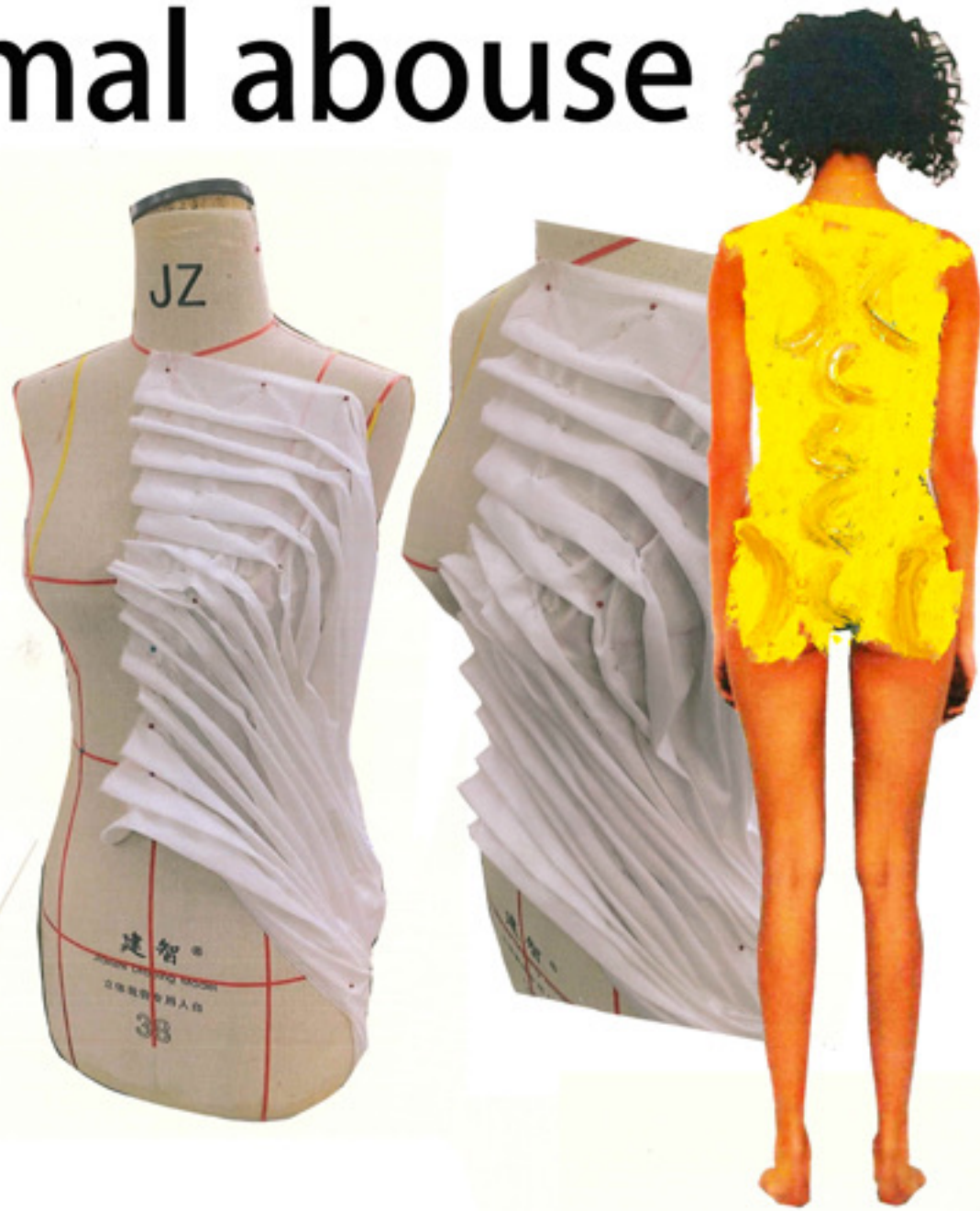
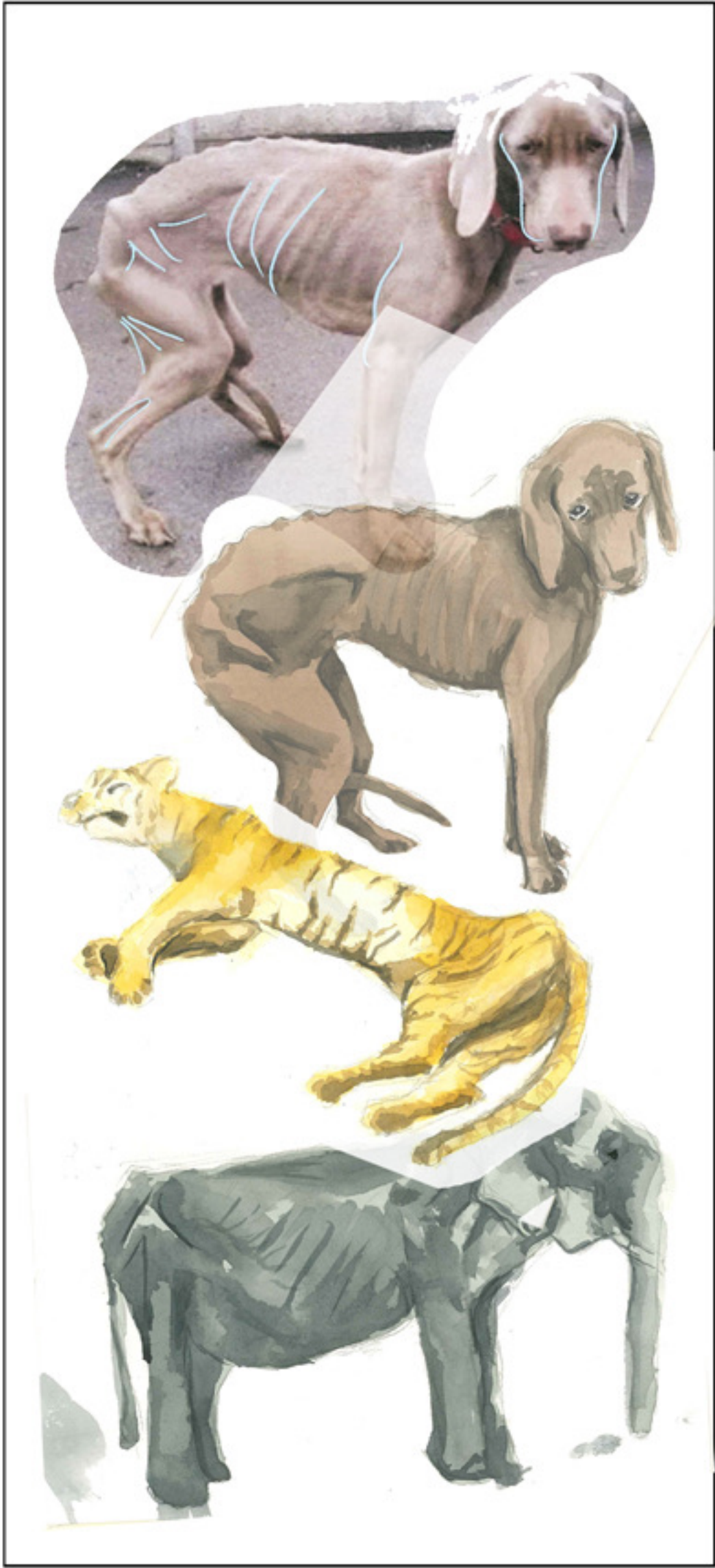




This project is about animals that have been harmed by human. Both wild and domestic animals suffer a great pain. I have watched a lot of documentaries about rescuing animals, and i have found that humans do more damage than I thought. I want to wake people up through this project to care more about and love animals.



# Research of animal abuse



Animals kept in the zoo and some domestic pets were abused and endured prolonged starvation. The bones protruding the body. The skin became very loose. Some paintings and draping of prominent bones and loose skin.



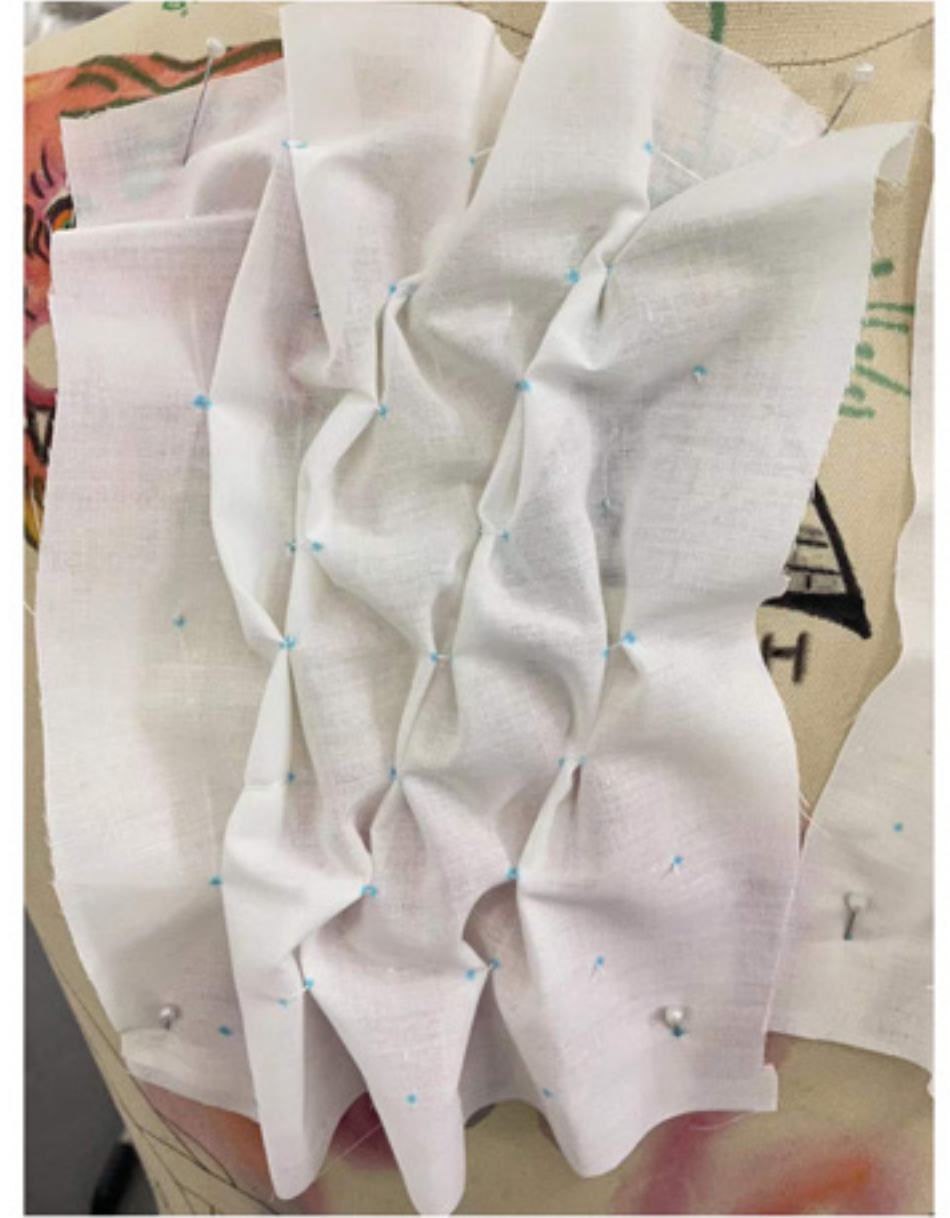


# draping development



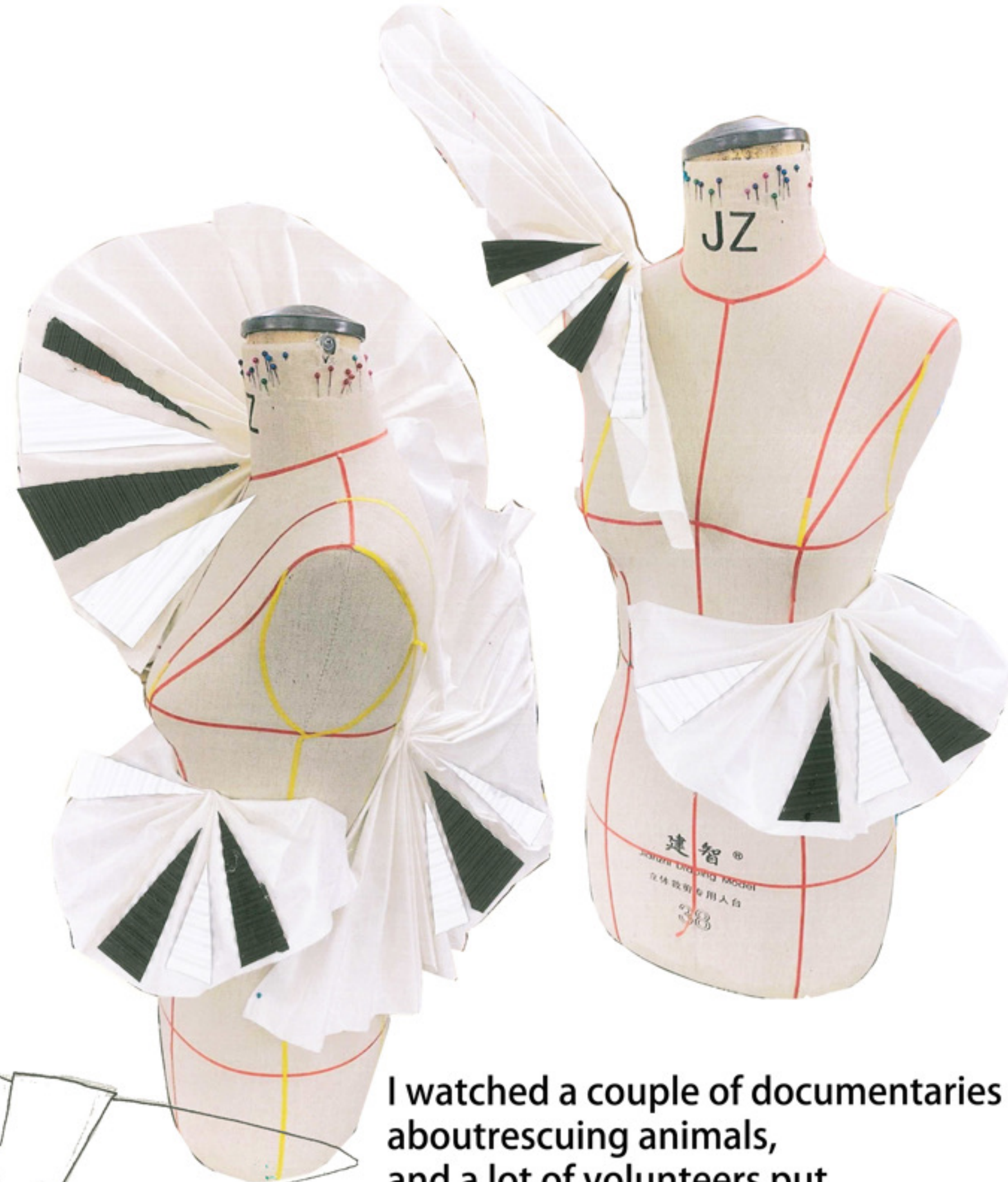
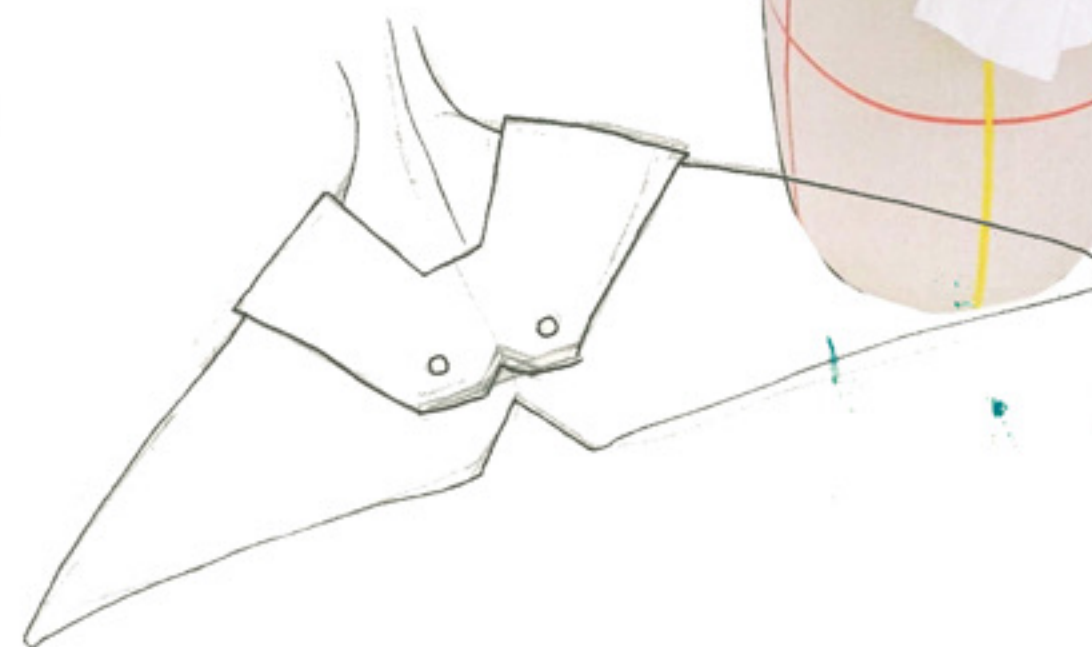
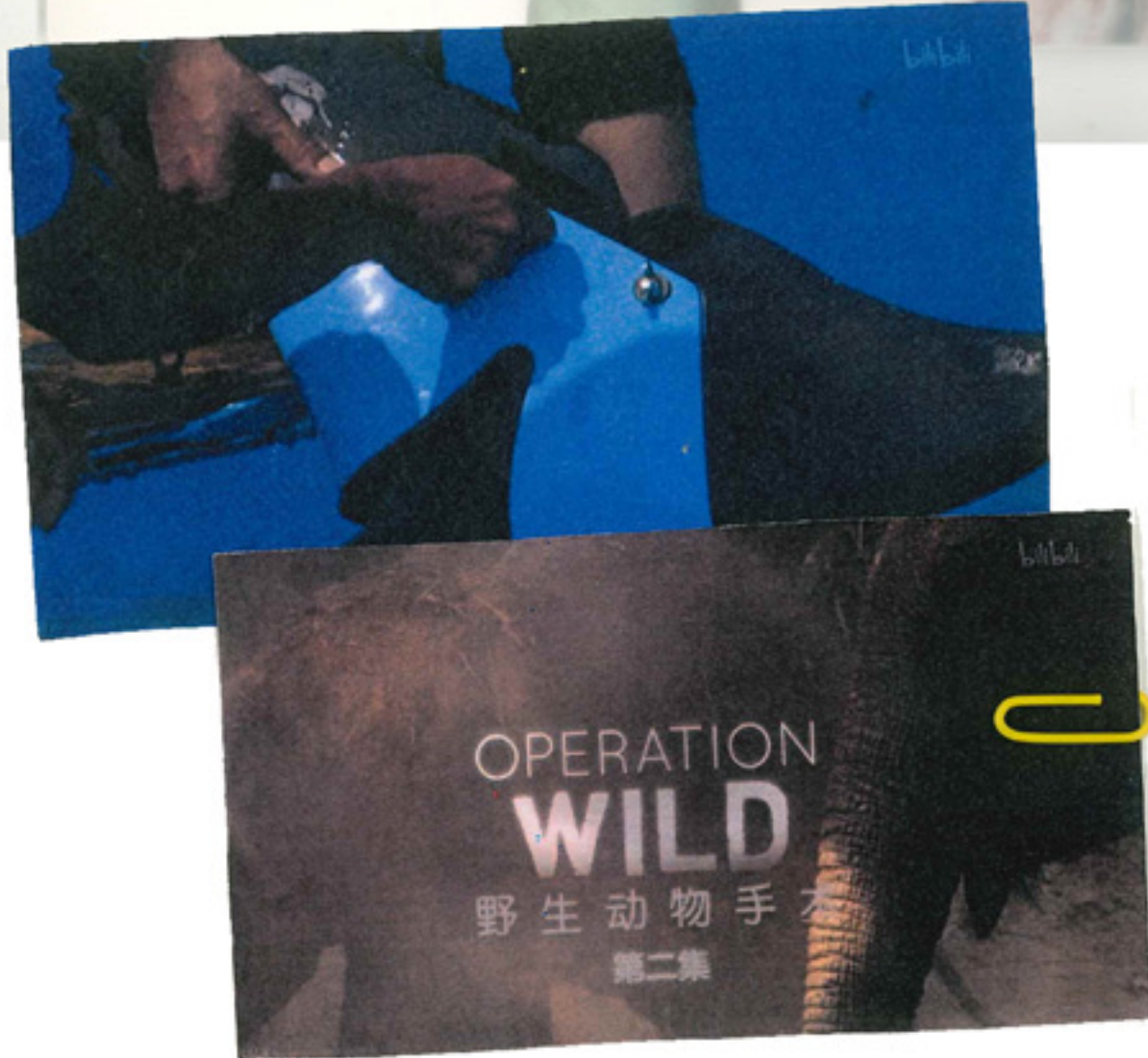


# Further research & experiment





# research & experiment of artificial limbs for animals



I watched a couple of documentaries about rescuing animals, and a lot of volunteers put artificial limbs on animals. It's interesting how these prosthetic limbs look and move



# Further experiment





# Research about animals and garbage



Draping of collar

Human abandoned garbage is mistakenly eaten or wrapped by animals around them and cannot be removed. Plastic wrapped around body to show animals stuck by garbage, and plastic is also the most easily eaten by mistake and hardest removed by animal

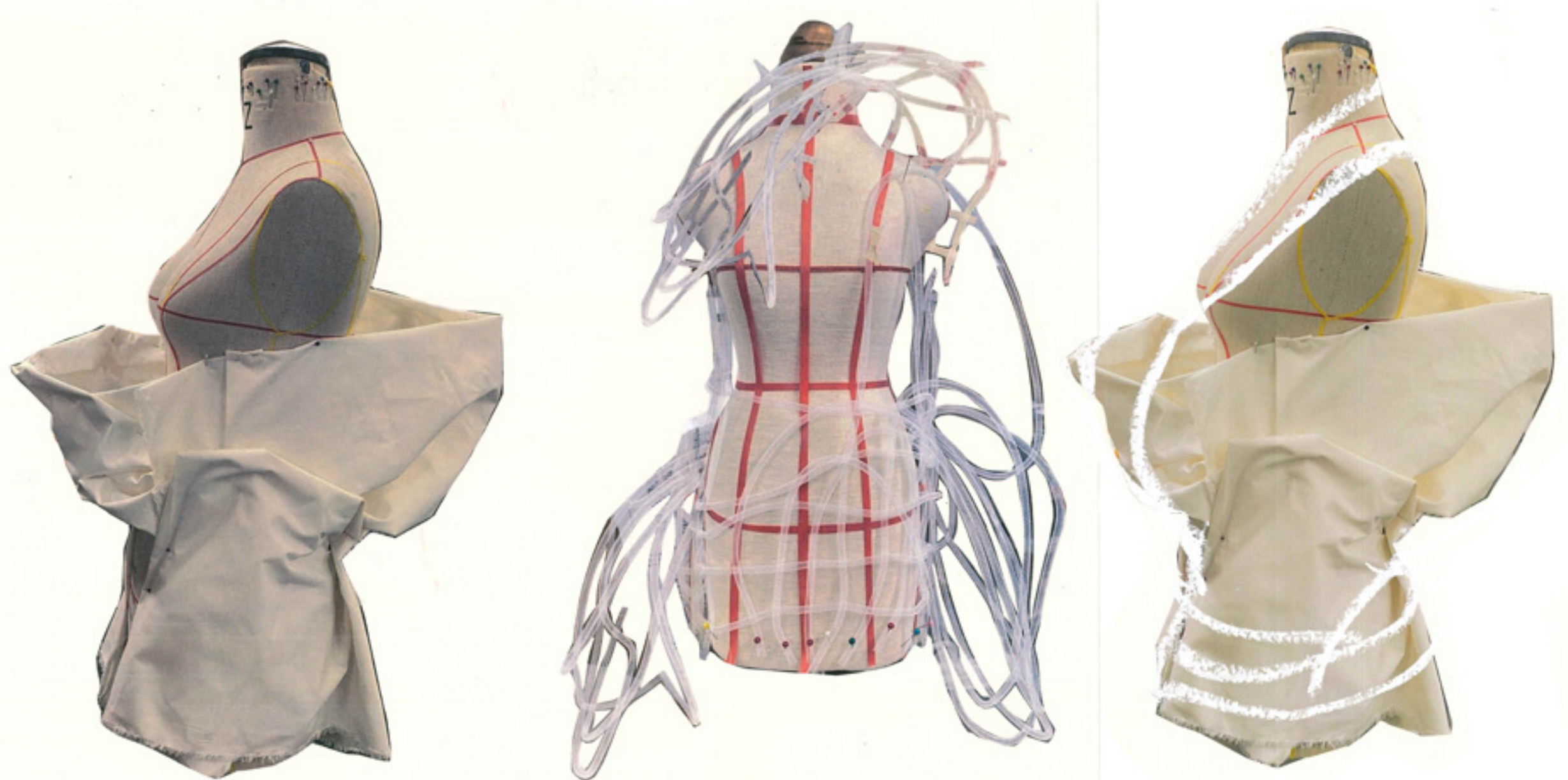
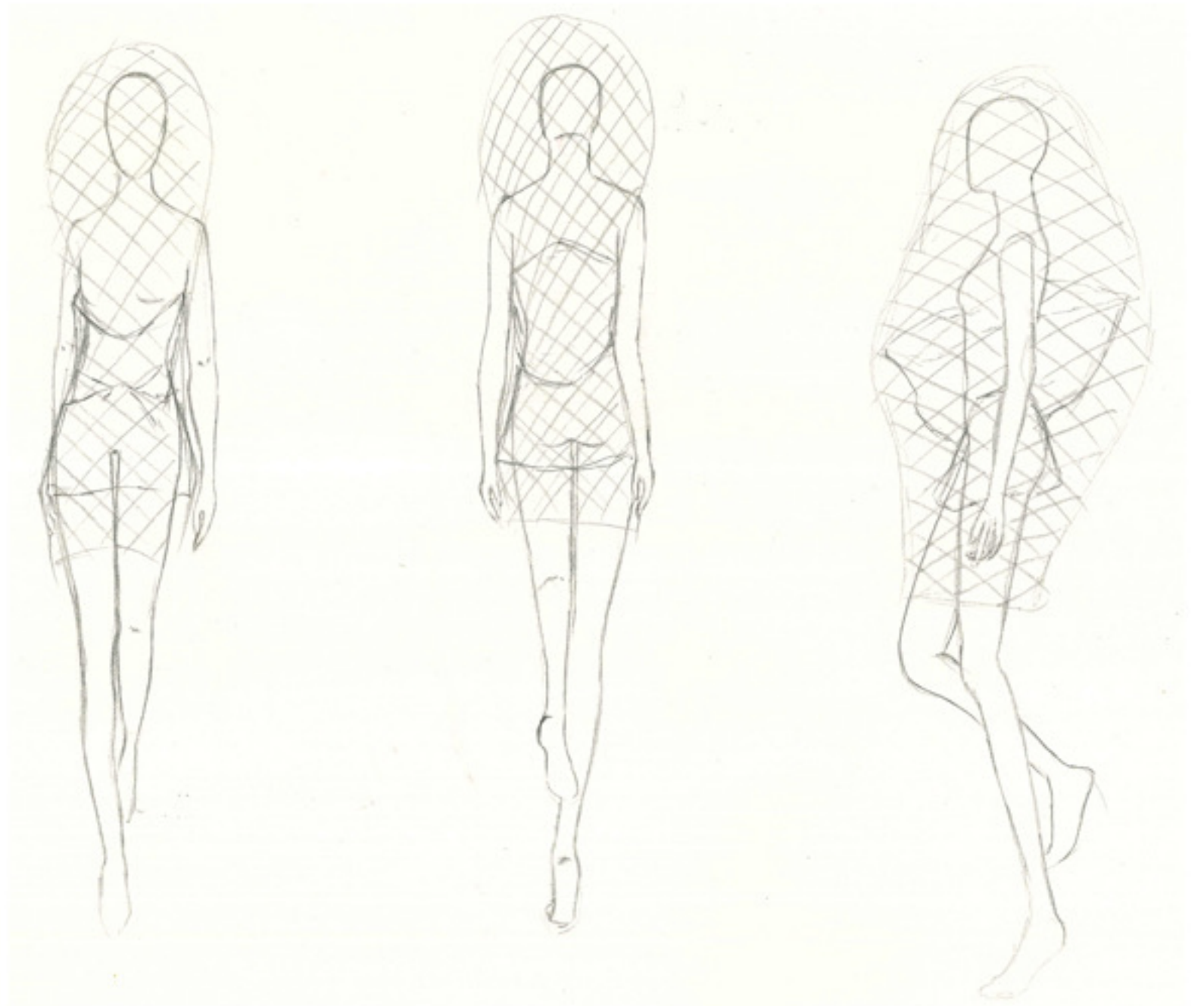




# further development



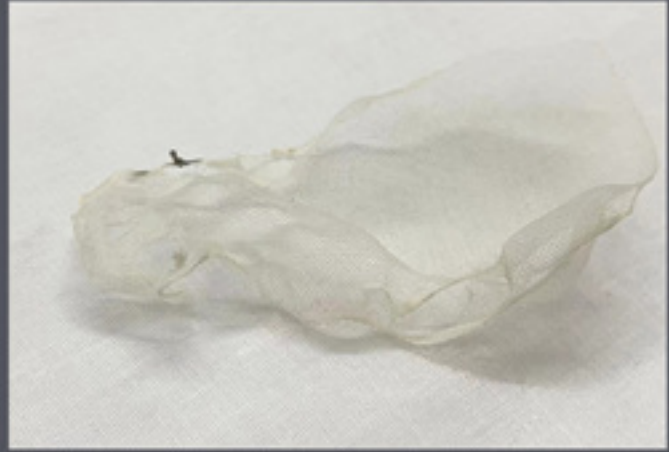
The plastic hose imitates the state of being entangled by plastic. The shape is the appearance of being stretched to deformation





# Textile experiment

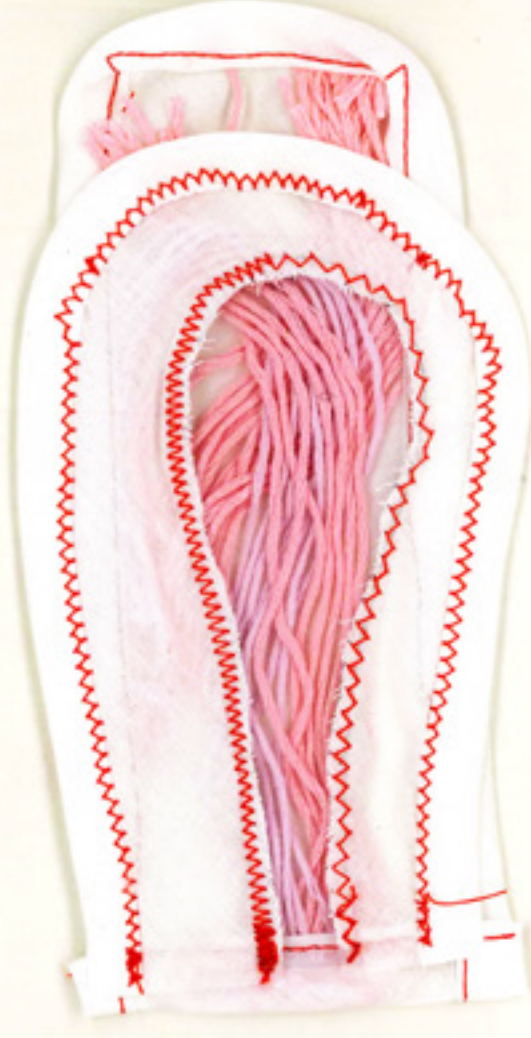
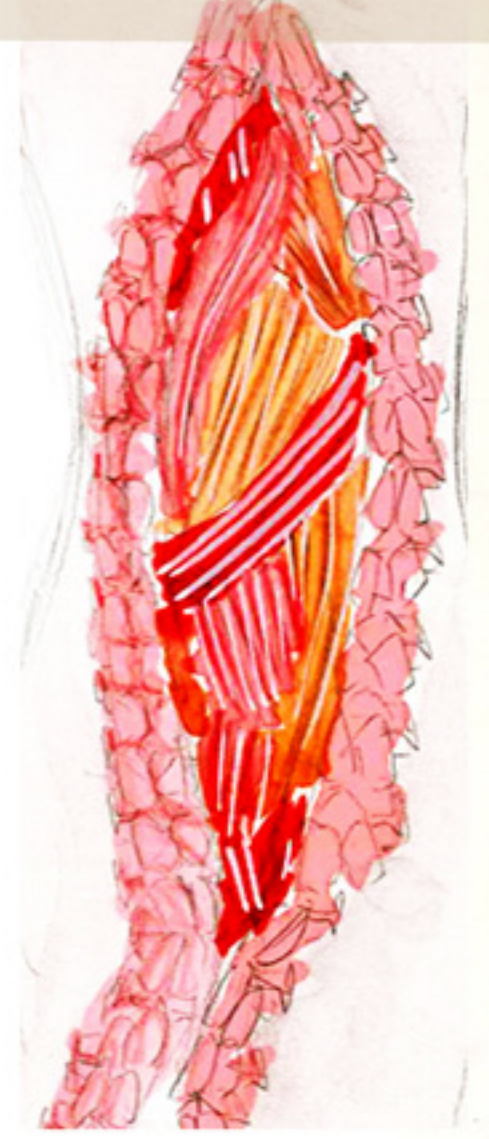
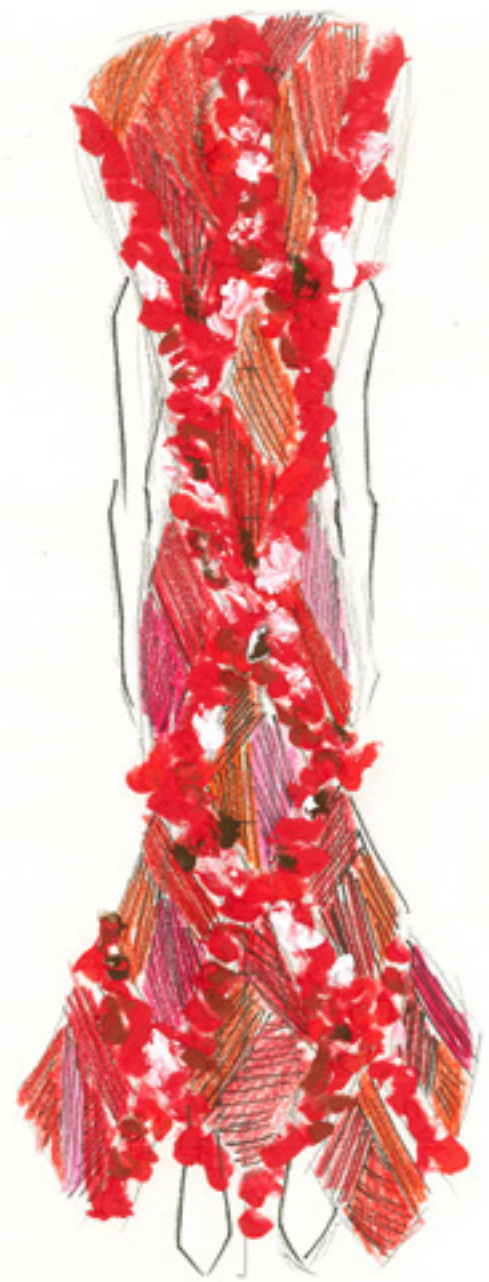
Use a lighter to light the edges of the yarn to mimic plastic bags in the sea.  
sewn together to make a new fabric  
Combine it with human body





# Fishing research & experiment

Sharks with their fins cut off will thrown back into the sea for death  
Use shark fin wounds as a design inspiration

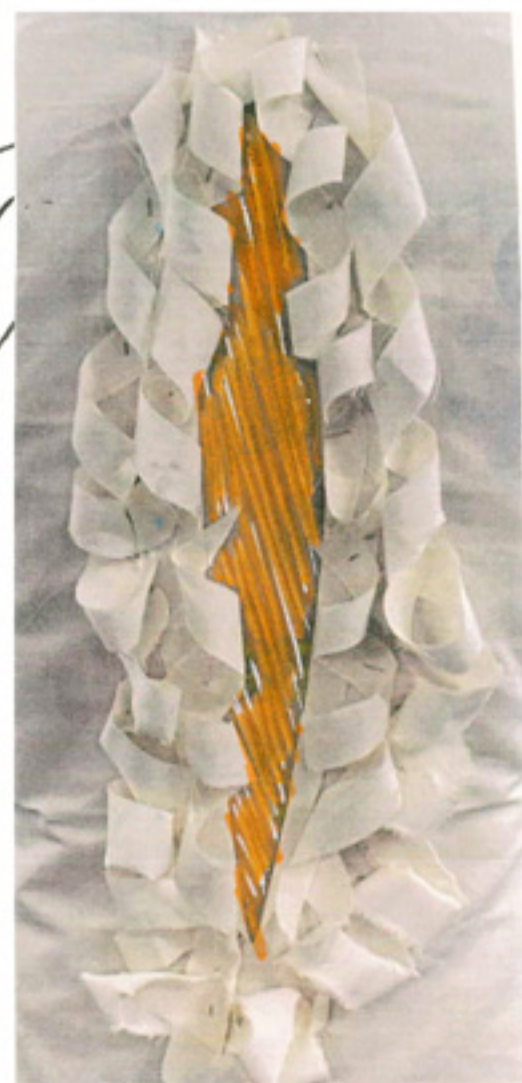


Embroider wool between two layers of cloth to mimic the texture of a wound. The top layer of fabric is hollowed out and a transparent plastic sheet is sewn into the hollowed area





# Back design and tailoring experiments





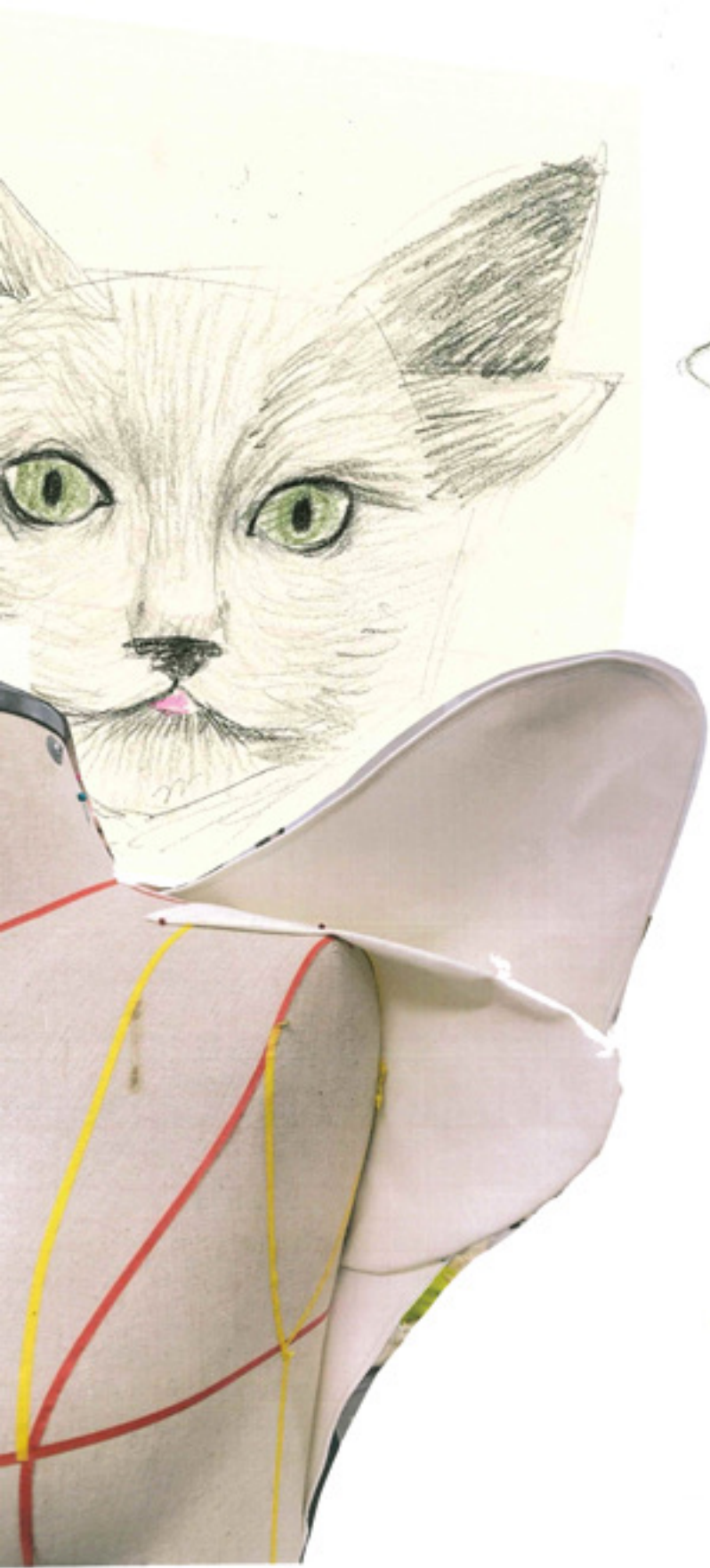
# Research of deformed animals



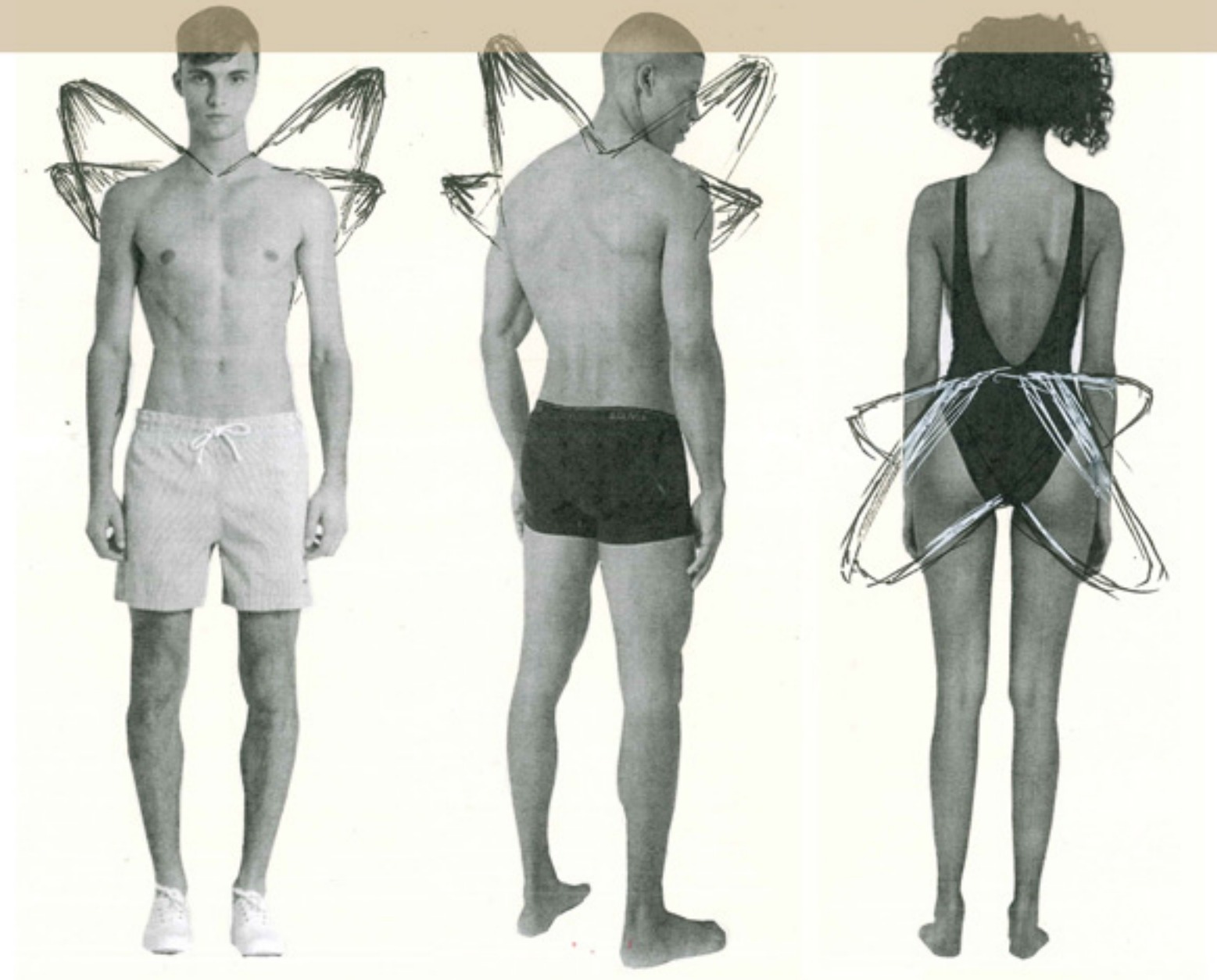
In order to make money, many unscrupulous businesses' inbreeding leads to many physical aberrations due to genetic defects



# development



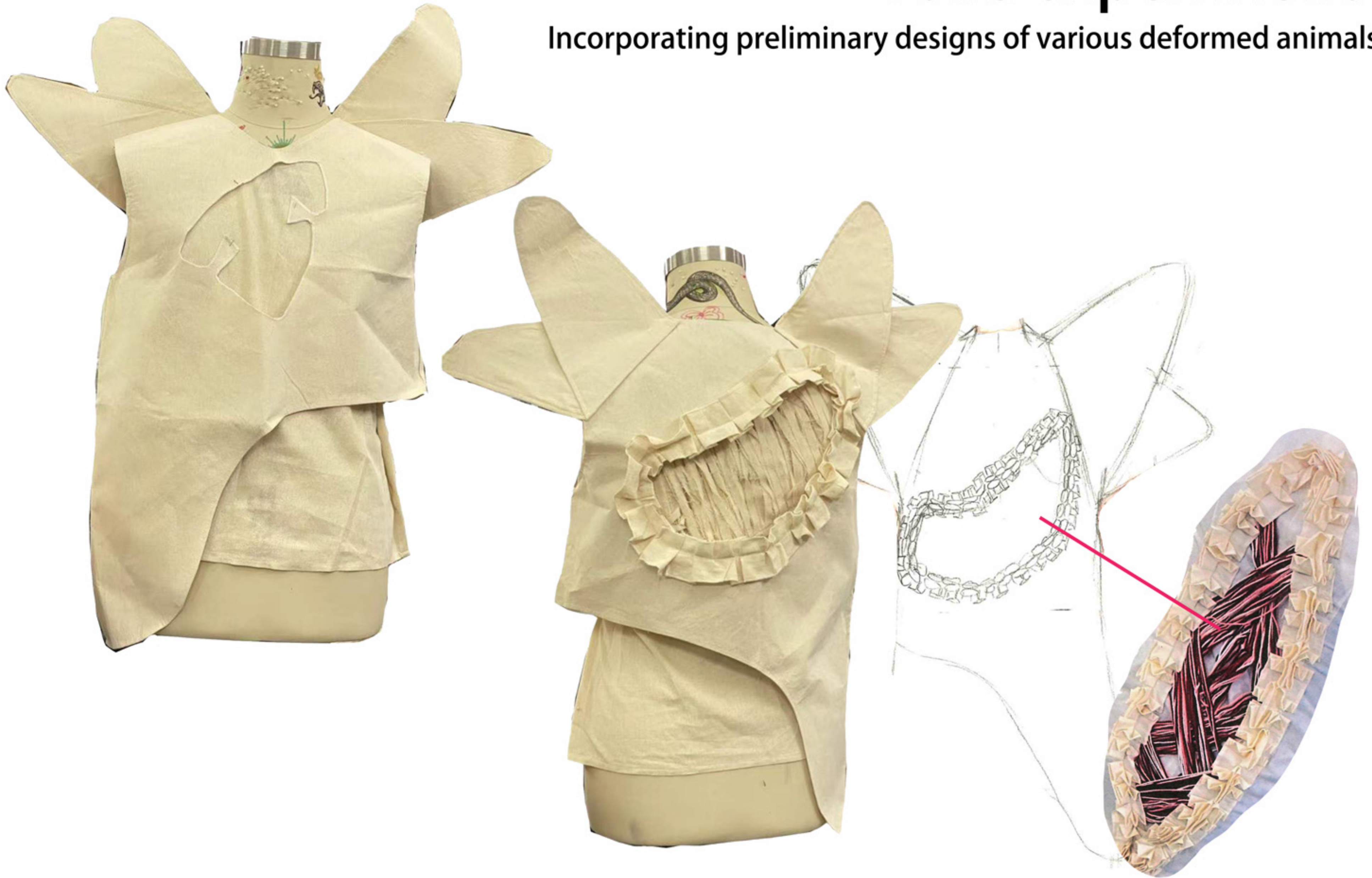
Design inspired by cats with four ears due of genetic problems  
Draping experiment





# Toile experiment

Incorporating preliminary designs of various deformed animals





# Line up

